

# MICE PAMPLONA AND NAVARRA

meetings&events



Kingdom of  
**Navarra**



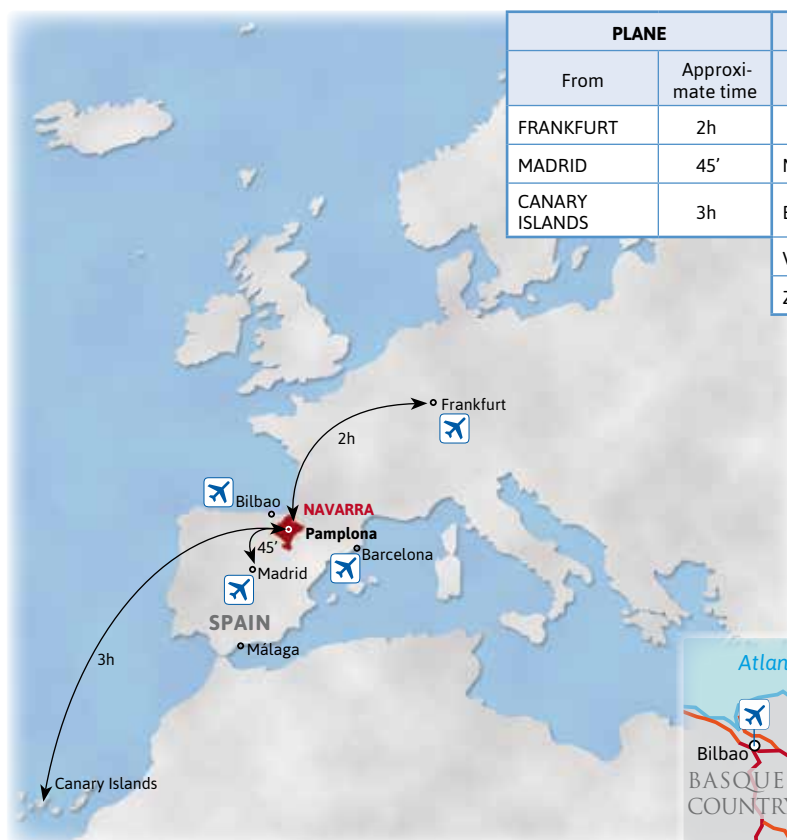
Nafarroako  Gobierno  
Gobernua de Navarra



**PAMPLONA**  
**IRUÑA** ! Reuniones  
y eventos  
Meetings  
and Events



# How to get there



PLANE		TRAIN		CAR		
From	Approximate time	From	Approximate time	From the airport of	Km	Approximate time
FRANKFURT	2h			PAMPLONA/IRUÑA	6	15'
MADRID	45'	MADRID	3h 10'	MADRID	379	4h
CANARY ISLANDS	3h	BARCELONA	4h 30'	BARCELONA	482	4h 30'
		VITORIA	1h	VITORIA/GAZTEIZ	97	45'
		ZARAGOZA	1h 46'	ZARAGOZA	179	2h
				LOGROÑO	95	1h
				DONOSTI/ SAN SEBASTIÁN	82	45'
				BILBAO	156	1h 45'
				SANTANDER	251	2h 45'
				BIARRITZ	127	1h 30'
				PAU	240	2h 30'
				LOURDES	274	2h 35'



## INDEX

OPCs ..... 8

Travel organisers ..... 9

### ■ Unique headquarters in Pamplona:

- Baluarte ..... 12
- Pamplona Cathedral ..... 18
- Colegio de Médicos ..... 19
- MUN ..... 20
- Museum of Navarre ..... 21
- Navarra Arena ..... 22
- Pamplona Planetarium ..... 24
- REFENA ..... 25
- Gayarre Theatre ..... 26

### ■ Unique headquarters in Navarre:

- Centro de Esquí ..... 27
- Circuit of Navarre ..... 28
- Sendaviva ..... 29

Pamplona Hotels ..... 30

Tudela, city of conferences ..... 44

Tudela Hotels ..... 45

MICE hotels ..... 47

Destination Navarre ..... 48

Gastronomy ..... 54

Leisure ..... 56

Tourism Activities ..... 58

Mobility ..... 60





# WHY IN NAVARRE?

Because of its modern infrastructures boasting cutting-edge technology.

Because of its privileged position as a gateway to Europe in Spain.

Because it is an innovative, safe, professional, and welcoming community.

Because of its capital, Pamplona: A green, walled city that is accessible and sustainable, comfortable and manageable... A city that offers its unique historical and architectural heritage to turn your event into an unforgettable experience.

Because of its diverse and extensive complementary offer to set up a world of experiences in a matter of minutes.

BECAUSE WE ARE QUALITY OF LIFE, QUALITY SERVICE, QUALITY FOOD AND HOSPITALITY, AND ENVIRONMENTAL QUALITY GUARANTEED SUCCESS.



## Why in Navarre?

### PAMPLONA, A WALLED GREEN CITY

Founded by the Romans and crossed by the Camino de Santiago, Pamplona is known throughout the world as being the home of the San Fermín festival. But look beyond the festival and the capital of Navarre is now a modern and welcoming city with a lot to offer: walking between ancient walls and cobbled streets; relaxing in parks and terraces; sampling the delicious pinchos and the lively Old Quarter; visiting historic monuments; shopping; first-rate shows; and watching traditional sports such as pelota.

Its central geographical location also makes it the perfect base from which to explore the main tourist sites in the region.



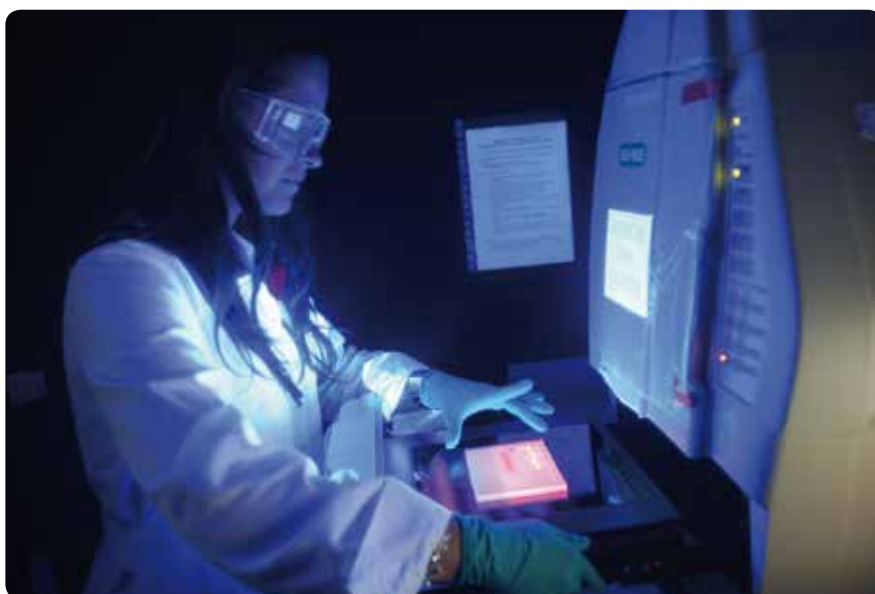
### ACCOMMODATION WITH GREAT REVIEWS

According to various surveys on national booking portals, the assessment and the satisfaction rate of our visitors in terms of accommodation is very high. We're delighted at this and the recognition of the efforts made by our establishments to improve the hospitality and professionalism offered.

In Navarre you'll find a range of quality options including rural houses with their beautiful architecture intact, large hotels providing special services, charming small hotels, well-equipped camp sites situated in beautiful natural surroundings, and simple and practical hostels offering a multitude of possible activities. We'll keep on working, because we want to improve in service quality, sustainability, accessibility and innovation, and we rely on your reviews and suggestions.

### LOOKING TO THE FUTURE

We are passionate about our roots and our history in Navarre, but we also live with our eyes towards a sustainable future. We are pioneers of renewable energy, medicine and education, and of all the autonomous communities in Spain we are the second largest investor in innovation, according to the Observatory of Business Competitiveness of the Spanish Chamber of Commerce.







## THE STORY OF A KINGDOM

Navarre has a rich history. From the first traces of humanity through to the Romanisation, the Navarran and French dynasties and the Carlist wars, and continuing to the present day, all these eras have left their mark on the landscapes, in the towns and in the interesting artistic heritage found there. It is a history filled with battles and covenants involving monarchs, pilgrims, indianos and the peoples of the region, and which has shaped our character and our individuality.



## SAN FERMÍN, THE 'UNIVERSAL FESTIVAL'

Pamplona hosts the festival of all festivals. When the chupinazo or rocket goes off on July 6th the city explodes to life. Thousands of people from across the world converge on this city which is coloured white and red for the occasion. Over the course of a few days the streets are filled with an outpouring of fraternity, joy and merrymaking accompanied by the rhythm of the charangas bands and fiestas.

The running of the bulls is the only part of the day when the festival is reined in and tension flows through the air minutes before the bulls begin their journey through the streets behind the runners. The festival continues with the caldico (broth), chocolate with churros, the procession, the giants and big-headed carnival figures, sipping an aperitif, the running of the bulls and the fireworks which segue into the night-time commotion.

There are also a number of celebrations throughout the year held all across the Navarre region. The festivals of the north fill the streets with their dances and exhibitions of rural sport, whilst in the south it is the young cows which become the star of the show amongst the red and white-stained festivities.



## GENUINE AND WELCOMING PEOPLE

They say that the Navarran people are loyal to their friends, supportive, genuine, a little stubborn, welcoming, and kind. And the people who visit us say the same, whether here for business or pleasure. Both those who came and went and those who stayed and remain here today. Our personalities differ from north to south, just like the climate, the landscapes and the gastronomy. Thus the overcast valleys of the north have shaped the noble and loveable character of the rural people who enjoy seclusion, conversation and the legends told over the camp fire. By contrast, heading south the mountains give way to wide plains warmed by a sun which brings life to the streets and encourages the extroverted and open nature of the people who live there.







## GATEWAY TO THE CAMINO DE SANTIAGO



Navarre is the gateway to the Camino de Santiago on the peninsula. Two great routes cross this land: one starting in the Pyrenees passing through the legendary Roncesvalles, and another starting in Aragón and crossing Sangüesa. The pilgrim has 200 kilometres along which to enjoy a prolific artistic legacy as well as the natural, cultural and culinary diversity to be found along this stretch of the Camino Francés, the trail developed in the 11th century by the Navarran king Sancho III the Great as the official route.

The Camino can be traversed by car, on foot, on a bike or on horseback. You will become immersed on this journey like no other and be nourished by the cultural exchange that takes place along a route which nowadays continues to be a meeting point for walkers motivated by religion, culture or sport. Whatever the reason for making the pilgrimage, it is an unforgettable personal experience.

The birth and heyday of the Camino was during the Middle Ages but it is now more alive than ever.

## LOCAL PRODUCE

The visitor to Navarre can experience the taste of times gone by. This is a land which has preserved a traditional culinary repertoire stocked by the produce yielded by the diverse Navarran landscape, and which turns food into a social event. But the region's cuisine has also evolved and been rejuvenated, and is the benchmark for the gourmet who doesn't want to miss out on creations from our best chefs.

What does our larder have to offer? Excellent vegetables from la Ribera such as cardoon, artichoke, fresh white beans, asparagus and piquillo peppers, as well as foie gras, mushrooms and flavoursome meats which have an unbeatable accompaniment - the red, rosé and white wines with DO Navarre and Rioja. And let's not forget the desserts - cheese, curd, rolled wafer sticks and leche frita (a fried mixture of flour, milk and sugar), rounded off with the typical local digestif called pacharán.

Then there's the pinchos... The Old Quarter of Pamplona is a particularly good place for sampling this exquisite miniature cuisine which is an old custom to be enjoyed just before sitting down to a proper meal. Most bars have a diverse selection of expertly prepared dishes, and along with traditional tapas offer sophisticated pinchos based on local produce.







## THRILLING NATURE

From the snow-capped peaks of the Pyrenees to the arid semi-desert of the Bardenas Reales, we encourage you to discover the rich nature of a region which has respected and conserved its natural environment. The variable climate of the Navarre region - surprising for a community as small as ours - has gifted us evergreen valleys such as the Roncal and Baztan, the beautiful, colourful and impressive Irati, Orgi and Quinto Real forests, and dizzying ravines sculpted by the passage of water, such as the Lumbier and Arbayún gorges.

You can also enjoy the peaceful reservoirs at Leurtza, the Irabia or Eugi reservoirs surrounded by forest, the active reservoir at Alloz and others, or the Pitillas and las Cañas lakes, themselves a refuge for bird life. Caves steeped in legend also await you, such as those at Zugarramurdi, as well as the caverns at Mendukilo and Urdazubi/Urdax which hide beautiful formations within. Navarre is home to many protected areas, amongst which are three natural parks: the Bertiz Natural Park, the Urbasa-Andia Natural Park and the Bardenas Reales Natural Park.

## LASTING TRADITIONS

Navarre is a land rich in history and legends, ancestral traditions and folk celebrations which are held with gusto. In Navarre, we are loyal to what we were and to what we are now.

Our carnivals are culturally diverse. The great Javierada pilgrimage is held in March, and the arrival of spring brings hordes of religious pilgrims. The Semana Santa (Holy Week) is celebrated with particular fervour in Corella, Tudela and Pamplona. The Day of the River Raft is held at the beginning of May. When summer has arrived, and whilst rockets are being fired in Pamplona to mark the opening of the famous festival of San Fermín, the peoples of the Pyrenees recall witches' covens and medieval treaties, perform ancestral dances and take part in rural sports. In the uplands and la Ribera (the Shore), filled with the sounds of the traditional jota dance, fighting bulls are set loose and a multitude of lively local holidays are celebrated.

Autumn brings transhumant flocks of sheep from Roncal to the Bardenas, and the atmosphere in Etxalar fills with expectation when the pigeon hunting season commences. And in winter, the Three Wise Men and the affable Olentzero come loaded with gifts for the local children. It's a great way to see out the year.



## SLOW TOURISM DESTINATION

We welcome the peaceful traveller. Those who take their time over the good moments, contemplation and conversation. Those who breathe deeply and live fully, who seek and find, who savour, and who love life.

Admire the waterfalls in spring, lose yourself in an autumn forest and listen to the animal calls, become enchanted by a Romanesque entrance hall, walk the Camino de Santiago, enjoy a good meal (whether haute cuisine or a simple menu of the day), have a good time with your friends or family in a rural house, escape to Pamplona for a romantic weekend...Navarre offers a thousand ways to live peacefully.



# OPC's (Professional Conference Organisers)



## EVENTOS NAVARRA

(+34) 948 203 773

[comercial@eventosnavarra.com](mailto:comercial@eventosnavarra.com)

[www.eventosnavarra.com](http://www.eventosnavarra.com)



## VAST

(+34) 610 712 064

[info@grupovast.com](mailto:info@grupovast.com)

[www.grupovast.com](http://www.grupovast.com)



## VIAJES EL CORTE INGLÉS

Paseo Anelíer 30

(+34) 948 383 329

[comercialpamplona@viajeseci.es](mailto:comercialpamplona@viajeseci.es)

[www.viajeselcorteingles.com](http://www.viajeselcorteingles.com)







## ANARTU

Asociación Navarra de Agencias  
Receptivas Turísticas

(+34) 948 293 479

[info@anartu.com](mailto:info@anartu.com)



## Receptive Travel Agencies associated with ANARTU:

### CORRIENDOPORELMUNDO

- Guided running, cycling and Nordic walking tours
  - "Gastrotirada", a product which consists of getting to know parts of Navarre running or walking with the added bonus of tasting local products afterwards.
  - Adventure plan (customised), which includes visiting different places in small, closed groups and includes kayaking, orienteering or other sports.
- **Languages:** Spanish, Basque, English, French and German.

#### CONTACT:

(+34) 691 389 621

[info@corriendoporelmundo.com](mailto:info@corriendoporelmundo.com)

[www.corriendoporelmundo.com/navarra](http://www.corriendoporelmundo.com/navarra)

### CR LISTEN

- Specialised tourist operators for the Santiago Way in Spain, both for small groups and individuals.
  - Routes on foot, by bike, in a vehicle with accompanying guides (The Ways in Navarre, the Way in the Baztán Valley, the complete and partial French Route, the Coastal/Northern Routes, Portuguese Route, Primitive Route, etc.), Ignatius Route, Marian Route.
  - Religious tourism.
  - Experiences and coaching on the Way.
  - Organising tourist programmes in Navarre and the North of Spain.
- **Languages:** English, Spanish.

#### CONTACT:

(+34) 665 555 920

[ursula@crlisten.com](mailto:ursula@crlisten.com)

[info@pilgrimpathways.com](mailto:info@pilgrimpathways.com)

[www.pilgrimpathways.com](http://www.pilgrimpathways.com)

[www.crlisten.com](http://www.crlisten.com)

### DESTINO NAVARRA. Tourist guides

- Guided tours around Pamplona and Navarre to discover its history, art and traditions.
  - San Fermín programmes. Renting balconies to see the Bull Run.
  - Tapas and Pincho route and visit to wine cellars.
  - Tours around the Natural Park of Las Bardenas Reales, coach tours, 4x4 and hiking.
  - Santiago Way in Navarre: hiking with an Official Local Guide.
  - Company incentive programme.
  - Coordinating and booking hotels, restaurants, transport.
- **Languages:** Spanish, Basque, French, English, German and Italian.

#### CONTACT:

(+34) 644 288 407

[mikel@destinonavarra.com](mailto:mikel@destinonavarra.com)

[guiapamplona@gmail.com](mailto:guiapamplona@gmail.com)

[www.destinonavarra.com](http://www.destinonavarra.com)

[www.sanferminbylocals.com](http://www.sanferminbylocals.com)

[www.pamplonabylocals.com](http://www.pamplonabylocals.com)



## INCOMING NAVARRA / Erreka Guías Locales

- Visits to the town of Pamplona: Both general visits of the town as well as theme visits (Sanfermines, fortresses, art, etc)
- Cultural Routes in Navarra: to discover art, landscape, traditions and history of Navarra region. We design tailor made routes according to group interests and schedule
- Exclusive services during Sanfermin Festival: We offer balconies for Chupinazo (Opening Ceremony) and also along the path of the running. As well as special breakfasts, guided visits, dinners and tickets for events.
- Pintxos Route. Organized in small groups, our guides will take participants to the most emblematic bars in town.

► **Languages:** Spanish, Basque, French, English, German and Italian.

### CONTACT:

(+34) **948 221 506**

[info@incomingnavarra.com](mailto:info@incomingnavarra.com)

[www.incomingnavarra.com](http://www.incomingnavarra.com)

## KOROLEVSTVO NAVARRA

- Specialized in Russian-speaking customers.
- They organize both gastronomic and cultural trips for individuals and small groups.
- Trips to San Fermin and wineries.
- They offer guided tours to the most interesting places in Navarra.
- They organize cooking workshops and cheese tastings.

► **Languages:** Spanish and Russian.

### CONTACT:

(+34) **634 604 016**

[info@turizmnavarra.ru](mailto:info@turizmnavarra.ru)

[www.turizmnavarra.ru](http://www.turizmnavarra.ru)

## NAVARRA ADENTRO

- Designs and operates activities and trips in Navarre, La Rioja and the Basque Country on both sides of the Spanish-French border, based on discovering each destination from within, living true experiences and interacting with the local people, real people.
- The programmes include unique, exclusive activities and experiences with different themes focusing on food, history, traditions and customs, folklore, local sports, nature, adventure, *team building*, etc.

► **Languages:** Spanish, Basque, Catalan, English, French, German, Italian and Russian.

### CONTACT:

(+34) **948 316 141**

(+34) **659 636 268**

[igor@navarraadentro.com](mailto:igor@navarraadentro.com)

[www.navarraadentro.com](http://www.navarraadentro.com)

## NORTHERN SPAIN TRAVEL

- VIP travel packages accompanied by local guides.
- Combined experience such as gastronomy, wine and local products;
- Customised getaways to discover Navarre, the Basque Country and La Rioja
- Santiago Way
- San Fermín festivities and the bull runs

► **Languages:** English and Spanish.

### CONTACT:

(+34) **628 601 560**

[info@northernspaintravel.com](mailto:info@northernspaintravel.com)

[www.northernspaintravel.com](http://www.northernspaintravel.com)

## OVERTRAILS INCOMING

- Guided visits of Pamplona lasting approximately 2 hours. Themed visits: The Pamplona Bull Run, Medieval Pamplona, Hemingway and General Pamplona.
- Regular and private trips in Navarre, the Autonomous Community of the Basque Country, La Rioja and Aragon in Euro6 C-Class vehicles. Minimum 2 people, maximum 15 people.
- Groups and Tourism Events of any kind; Congresses, DMC, MICE, Tourism Groups... From 15 to 800 people.

► **Languages:** Spanish, Basque, English, French, German and Italian.

### CONTACT:

(+34) **948 293 479**

[info@overtrailsincoming.eus](mailto:info@overtrailsincoming.eus)

[www.overtrailsincoming.eus](http://www.overtrailsincoming.eus)





## PARQUE DE LA NATURALEZA DE NAVARRA-SENDAVIVA VIAJES

- Travel packages: accommodation, cultural activities and active tourism in Navarre.
- Tickets for Sendaviva.
- Transfers.
- **Languages:** Spanish, Basque, English, French and German.

**CONTACT:**  
 (+34) **948 08 81 00**  
[info@sendaviva.com](mailto:info@sendaviva.com)  
[www.sendaviva.com](http://www.sendaviva.com)

## PIRENALYS ATLANTIC

- Services for foreign clients and health tourism
- Excursions with professional guides
- Gourmet Experiences (pintxo routes, trips to wineries and cheese shops, tastings, cooking classes...)
- Tours related to San Fermin.
- **Languages:** Spanish, English, Portuguese and Russian.

**CONTACT:**  
 (+34) **948 111 400**  
 (+34) **648 901 589**  
[info@pyrenalis.com](mailto:info@pyrenalis.com)  
[www.pyrenalis.com](http://www.pyrenalis.com)

## PIRINEOS PUNTO BIKE

- Inbound services related to all kinds of cycle-tourism, road cycling, mountain biking, or cycling the Greenways
- Closed packages with customised route designs and created depending on the kilometres and requirements of each client.
- Combining cycling with gastronomy and historical heritage.
- **Languages:** Spanish, English and French.

**CONTACT:**  
 (+34) **666 564 771**  
[info@pirineos.bike](mailto:info@pirineos.bike)  
[www.pirineos.bike](http://www.pirineos.bike)

## TURNABARRA

- Bundling of tourism products.
- Transfers.
- Hotels.
- Restauration.
- Guided tours.
- Gastronomic tours and wine tourism.
- Scheduled and customised excursions for 2 or more people.
- Group excursion.s

**CONTACT:**  
 (+34) **948 468 995**  
 (+34) **640 379 558**  
[dirección@turnavarra.es](mailto:dirección@turnavarra.es)  
[www.turnavarra.es](http://www.turnavarra.es)

## Other Receptive Travel Agencies:

### NASHIRA

- Organising and designing customised trips, including luxury experiences (with the type of accommodation and private activities related to wine tourism and gastronomy, among others, and providing clients with luxury chauffeured vehicles for moving along the route).
- Routes offered in the Basque Country, La Rioja and France
- **Languages:** English, French and German.

**CONTACT:**  
 (+34) **948 102 873**  
[info@nashira.es](mailto:info@nashira.es)  
[www.nashira.es](http://www.nashira.es)



# BALUARTE Conference Centre

Contact: Baluarte

+34 948 066 066

baluarte@baluarte.com

www.baluarte.com

## BALUARTE

### BALUARTE, in the city

Pamplona is a medium sized city which has managed to grow while preserving its various historical sites: the medieval town, the Renaissance Citadel, the modernist extension... It is precisely, between the two latter that the Baluarte is located. From here, you can access the city's main landmarks on foot, without the need to use your car.

#### DISTANCES WITHIN THE CITY

##### [BY CAR]

FROM BALUARTE TO...	minutes
RAILWAY STATION	10
AIRPORT	12

##### [ON FOOT]

FROM BALUARTE TO...	minutes
BUS STATION	3
BULLRING	7







## FOR MEETINGS

**MAIN AUDITORIUM AND CHAMBER HALL.** The auditoriums welcome artists in the evenings and lectures and large audience events during the day. With 1,568 and 444 seats respectively, they are very suitable facilities for large meetings.



The Main Auditorium of BALUARTE, with 1,568 seats (1,036 in stalls), offers an excellent view of the stage from any seat.

The walls are panelled in beech wood, and the size and light of the auditorium mean that all kinds of cultural and congress activities can be held there.

Access is from the ground floor, level -1 and upper floor. There is a cloakroom next to the main entrance doors on the ground floor.

### MAIN HALL GROUND FLOOR

- ▣ Total capacity: 1,568 seats
- ▣ Hall: 1,036 seats
- ▣ Audio-visual booth with sound mixing table
- ▣ Technical lighting booth
- ▣ Simultaneous translation
- ▣ All kinds of audio-visual media available

#### STAGE

- ▣ Surface area: 520 m<sup>2</sup>
- ▣ Maximum depth: 18.8 m
- ▣ Maximum width: 27.7 m



BALUARTE's Chamber Music Hall can accommodate 444 people and is the ideal place for medium-sized meetings or congresses.

Located on the ground floor of the building next to the interior cafeteria, it is also used for concerts and other small-format cultural activities. It has its own cloakroom, located next to the entrance doors.

### CHAMBER HALL GROUND FLOOR

- ▣ Capacity: 444 seats
- ▣ Audio-visual booth with sound mixing table
- ▣ Technical lighting booth
- ▣ Simultaneous interpreting booths and equipment
- ▣ All kinds of audio-visual media available

#### STAGE

- ▣ Surface area: 104 m<sup>2</sup>
- ▣ Maximum depth: 7.2 m
- ▣ Width: 14.5 m



# Baluarte. Conference Centre

**CONFERENCE HALLS.** The two specific spaces for conference activities are located on the third floor of the building. They are the Luneta and Ciudadela halls, with a capacity of 350 each. Both can be subdivided to create smaller areas, down to a minimum of 20 attendees.

## CONGRESS HALL

### 3<sup>RD</sup> FLOOR

- ▣ Surface area: 440 m<sup>2</sup> each hall
- ▣ Maximum height: 5 m
- ▣ 4 audio-visual control and simultaneous interpreting booths
- ▣ Ciudadela Hall: divisible into up to eight rooms
- ▣ Luneta Hall: divisible into up to four rooms

#### CAPACITY OF CIUDEDELA & LUNETA HALLS

	THEATRE	CLASSROOM
COMPLETE ROOM	350	250
3/4 OF ROOM	280	160
HALF ROOM	140	100
1/4 OF ROOM	50	30
1/8 OF ROOM (CIUDEDELA ONLY)	20	



On its third floor BALUARTE has views over the Citadel and the plaza through large windows in the lobby and corridors.

The versatility of the Ciudadela y Luneta halls, specifically designed for meetings and congresses, means that they can be arranged in different layouts through modular panels. The two halls are separated by the third floor lobby.

**LECTURE HALLS.** The Bulevar Hall is located under the main stage. It has a capacity of 100 attendants. The Gola and Corona halls can also accommodate 100 people each.

## CONFERENCE HALLS

### FLOOR -1

#### GOLA & CORONA HALLS

- ▣ Surface: 110 m<sup>2</sup> each
- ▣ Capacity: 97 seats per hall
- ▣ Audio-visual booth and simultaneous interpreting equipment

#### BULEVAR HALL

- ▣ Surface area: 200 m<sup>2</sup>
- ▣ Capacity: 140 in theatre configuration and 75 in training configuration
- ▣ Audio-visual booth and simultaneous interpreting equipment

#### PRESS ROOM

- ▣ Surface area: 75.1 m<sup>2</sup>
- ▣ Specially designed room for holding press conferences and as a working space for the media
- ▣ Twenty-four work stations available with individual sound, power and telephone connections
- ▣ Two telephone booths
- ▣ Dais for on-camera work



BULEVAR HALL ▲



GOLA HALL ▲

There are three small rooms on level -1 (basement): Gola, Corona and Bulevar. Access is from the street or the lobby. These rooms are used for conferences and breakout sessions in congresses. Two of them have fixed seats and the third is an open space.

The Press Room is specially adapted for press conferences and as a work room for the media.





## FOR EXHIBITIONS

Baluarte has a total of 4,800 m<sup>2</sup> used for exhibitions..

**EXHIBITION HALL.** Located on the ground floor, it has 2,000 m<sup>2</sup> for fairs or other mass events. Just above it is the Mezzanine, with a surface area of 1,000 m<sup>2</sup>. Both are accessible from the building itself or directly from the street.

**MURALLA HALL** It is probably the most unusual room of the building. Its layout is defined by the remains of the ancient bulwark of San Anton, which gives its name to the building. It was one of the ends of Pamplona's Citadel, built in the 16th and 17th centuries. When the remains discovered when the foundations were being dug out, it was decided to preserve them, creating an exhibition hall where the murmur of history and the winds of modernity coexist in perfect balance.



BALUARTE's Exhibition Hall is surprisingly large, with excellent light and an absence of columns. The dark grey colour of the floor contrasts with the white walls and glass that provide a view over the plaza. The room is cut off from the rest of the building by a large reddish wooden wall; the same lining as the Chamber Music Hall.

The Mezzanine Hall on the first level has a wooden floor and a large window overlooking the street. The two areas, linked by two staircases, mean that all kinds of exhibitions and events can be organised there, together with congress meals or closing dinners, large banquets or cocktails.

Sala Mezanina, located on level 1, can house exhibitions, presentations or meals or act as a complement to the Exhibition Hall in trade fairs. It has a surface area of 1,000 m<sup>2</sup> and a height of 5.35 m, plus electrical/voice/data connections. Access to the Mezzanine is via three routes: the two staircases or the lift (elevator) located in the Exhibition Hall. It also has a goods lift with access to the Exhibition Halls and the Sala de la Muralla.

### EXHIBITION HALL GROUND FLOOR AND 1<sup>ST</sup> FLOOR

- ▣ Ground floor surface area: 2,000 m<sup>2</sup>
- ▣ Height on ground floor: from 3 to 9.25 m
- ▣ First floor surface area: 1,000 m<sup>2</sup>
- ▣ Height on first floor: 5.35 m
- ▣ Electrical connections
- ▣ Voice and data connections
- ▣ Water and drainage connections



# Baluarte. Conference Centre

## MURALLA HALL FOOR -2

- ▣ Surface area: 1,800 m<sup>2</sup>
- ▣ Height: 6.35 m
- ▣ Electrical connections
- ▣ Voice and data connections



The remains of one of the five bastions of the Citadel of Pamplona are the main feature of this room. Both the exterior wall and the interior buttresses of the bastion create unique areas for holding exhibitions and presentations.

The conservation and integration of this 16th-century wall into the congress centre make it a unique area.







# Baluarte. Conference Centre

## OTHER FACILITIES

- ▣ Restaurant, coffee shop and catering service
- ▣ Car park with 900 vehicle capacity, open 24h a day
- ▣ Loading and unloading bay
- ▣ Offices
- ▣ Cloakroom
- ▣ 1st floor lobby indoor terrace: 250 m<sup>2</sup>
- ▣ 2nd floor lobby indoor terrace: 200 m<sup>2</sup>
- ▣ 3rd floor outdoor terrace: 295 m<sup>2</sup>
- ▣ Main lobby: 800 m<sup>2</sup>
- ▣ Outdoor plaza: 10,000 m<sup>2</sup>

## OTHER SERVICES

- ▣ Turnkey services
- ▣ Furniture available
- ▣ Outdoor and indoor poster stands
- ▣ Audio-visual technical assistance
- ▣ Lighting technical assistance
- ▣ Hostesses
- ▣ Hall and cloakroom staff
- ▣ Security
- ▣ Flexible hours
- ▣ Operational 365 days a year



**Every corner of BALUARTE can become, a meeting or leisure space at any time. In the restaurant you can taste the best examples of Navarrese cuisine and enjoy a privileged view of the Ciudadela Park, also from the outdoor terrace on the third floor. From the car park located under the building, there is direct access to the square, a large 10,000 m<sup>2</sup> area that can be used as an extension of the building when required.**





# PAMPLONA CATHEDRAL

Contact: Gonzalo García

+34 948 21 25 94

gonzalo.garcia@areadedivulgacion.com

www.catedraldepamplona.com



Navarre has an exceptional cultural heritage which is perfect for holding any MICE event.

The Pamplona Cathedral ensemble is one of the largest in Europe, with buildings dating back to the 11th, 12th, 15th and 18th centuries, as well as a new exhibition —Occidens— which just its first anniversary. The visible archaeological remains date back to the iron age and the exhibited works of art cover practically all styles, from Flemish altarpieces to Gothic and Romanesque carvings that add a valuable example of a religious treasure in the shape of reliquaries and liturgical objects.

**The Gothic church has a neoclassical façade and its two towers, the cloister, the upper cloister and the larder, not forgetting the refectory, old dining room of the canons and its kitchen, used as Museum and auditorium for concerts, conferences, congresses and banquets, are the open invitation to all visitors to the city.**



**Few scenarios provide a three-dimensional view, past, present and future, in a space so full of art, culture, tradition and history.**

In the last four years more than two hundred fifty thousand people have enjoyed this ensemble that has not closed its projects to remain as a simultaneous religious and tourist site.





# COLEGIO DE MÉDICOS

Contact: Javier Magallón Arzoz

+34 948 226 093

jmagallon@medena.es

www.pamplonacongresos.es

The Colegio de Médicos de Navarra (Navarre Medical Association) offers a unique alternative for holding of all kinds of health care, corporate and business events through their company *Congresos del Colegio de Médicos*.



The historic nature of the building, its privileged location in Pamplona, and its spacious halls make it the ideal place to hold in-house and external events.

Colegio de Médicos offers the infrastructure and necessary technical means to organise local and national conferences as well as courses, lectures, meetings and exhibitions.

In addition, Congresos del Colegio de Médicos has a team of professionals with more than fifteen years' experience to ensure a comprehensive service of the highest quality.

The venue offers numerous services and various **multi-purpose spaces with a maximum capacity of 300 people:**

- Conference Hall
- Adjoining classrooms
- Medialuna Hall
- Board Room
- Lounges



# Museo Universidad de Navarra

Contact: Teresa Lasheras

+34 948 425 700

eventosmuseo@unav.es

www.museo.unav.edu

## Art and nature: a unique place for professional tourism in Navarre



Terrace



Meeting room



Theatre

***The Museum is located on the University of Navarre campus (a 113-hectar expanse of tended parkland), next to the Pamplona neighbourhood of Iturrama with its bustling hospitality sector, and a 10-minute walk to the historical city centre.***

The architect, Rafael Moneo, describes it as the most abstract building he has ever designed, perhaps like the works within the Museum's art collection and exhibitions.

The three-storey building covers 11,000 m<sup>2</sup>, with 12 exhibition halls, a theatre-auditorium with 700 seats, a range of classrooms and workshops of different capacities, a restaurant, and unique spaces such as the vestibules, the

plaza and the passable terrace on the roof of the building, transforming any professional meeting into a special occasion for those attending.

This range of formats, spaces and services, means it can host any kind of congress or professional meeting. Attendees, as well as enjoying their activity in the utmost comfort, can also visit the exhibitions and participate in workshops or guided tours.





# MUSEUM OF NAVARRA

Contact: Maru Alfaro

+34 848 42 6492

[museo@navarra.es](mailto:museo@navarra.es)

[www.museodenavarra.navarra.es](http://www.museodenavarra.navarra.es)



A special centre with a past, a present and a future

***The Museum of Navarre is located on the northern side of the Pamplona city walls, just where the San Fermín festivities are started each July. Occupying a former nascent hospital, and completely renovated, the Museum holds and exhibits a varied collection of archaeological items and visual arts, dating from Prehistoric times to the 21st century. A visit to the Museum offers visitors a glimpse into the culture and history of Navarre.***

The vestibule organised as a large reception area, the



assembly hall with a capacity of 180 people, and the terrace with its unbeatable views, all offer modern spaces that encourage the exchange of knowledge and experiences.

The halls, which hold some of the most important international works, offer the public the choice of tours and visits, where they can find out more about Navarre and also reflect upon issues that affect today's society.

Right in the heart of the historical city centre, you can enjoy strolling through the streets, bursting with soul, cultural heritage and good gastronomy.





# NAVARRA ARENA

Contact: Mikel Azcona

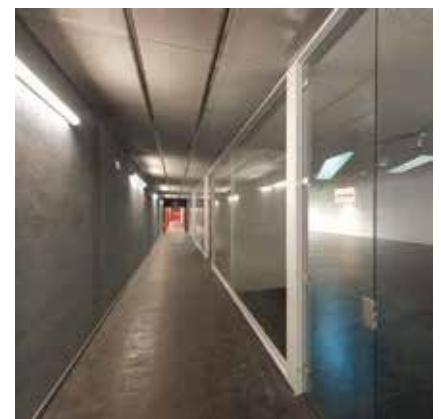
+34 948 066 066

m.azcona@nicdo.es

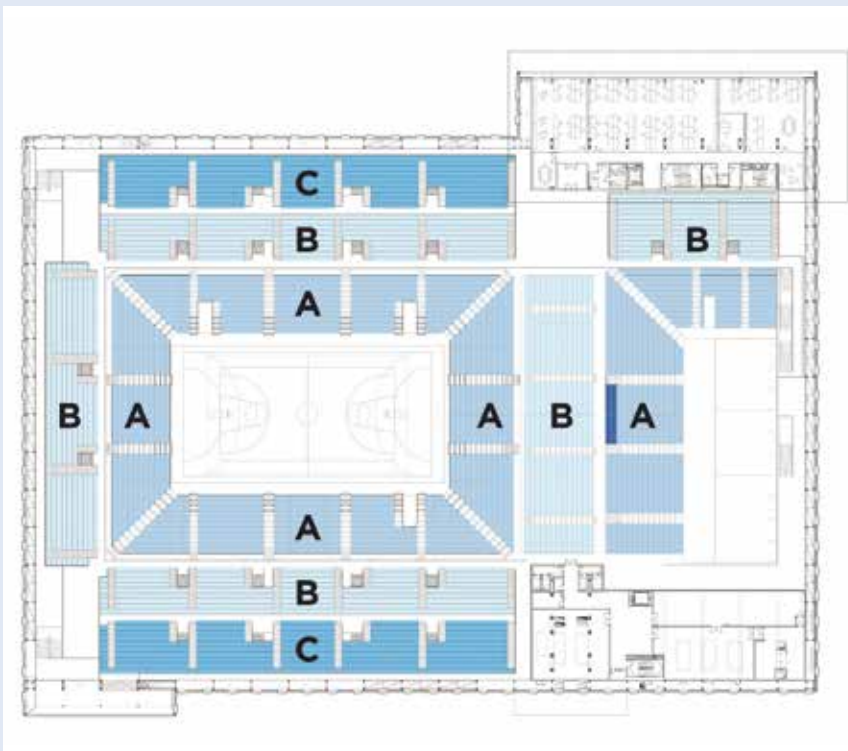
www.navarrarena.com



Navarra Arena is a multiuse building. It is equipped to host national and international cultural, sporting, recreational and corporate events. Its architecture means it can adapt to all spectator seating capacities. Its telescopic stands can be quickly adapted to the space needs of the client.







**CENTRAL COURT:** Area 3,000 m<sup>2</sup>  
Capacity (seated) 9,850 spectators.

**AUXILIARY COURT:** Area 1,600 m<sup>2</sup>  
Capacity (seated) 1,500 spectators.

**FRONTÓN ARENA:** Area 600 m<sup>2</sup>  
Capacity (seated) 3,000 spectators.

**AUXILIARY SPACES:**

- Multiuse Room. 250 people
- Audio-visual Room. 50 people
- Panoramic Footbridge. 250 people
- Press Room. 100 people
- Meeting rooms
- Gym/Backstage (300 m<sup>2</sup>)

**SERVICE SPACES:**

Cafeteria-restaurant  
Changing rooms  
Dressing rooms  
Warehouses 6,000 m<sup>3</sup>  
Public parking area (300 spaces)

## TELESCOPIC STANDS

Between both courts a block of telescopic stands has been set up, which can be turned to face both courts. It can be stored in the basement (retractable platform system) to join both courts together. The platform can also be used to hold concerts and shows.



**CAPACITY:** 11,850 spectators

**CONSTRUCTED AREA:** 45.685 m<sup>2</sup>

**LOCATION:** it is located in Calle Sadar, on a 20,000 m<sup>2</sup> plot next to the El Sadar (C.A. Osasuna) football stadium.





# Pamplona PLANETARIUM

Contact: Planetarium

+34 948 262 628

comercial@pamplonetario.org

www.pamplonetario.org

The planetarium opened in 1993 and has become a cultural, scientific, tourist and educational reference at the national level, since it is the largest in Spain with these characteristics. It is ideal as MICE space.



## planetario



de pamplona

The **Pamplona Planetarium** is a cultural centre that allows visitors to fully experience the world of astronomy and the mysteries of the universe without leaving their seats. The Pamplona Planetarium projection dome is 20 m in diameter, one of the largest in the world, and displays more than nine thousand stars. Fasten your seatbelts. The journey has begun...

The Pamplona Planetarium is cylindrical with ochre and blue hues. It is the largest in Spain with these characteristics. In addition to its normal projections, it is home to numerous exhibitions, lectures and shows, visited by more than two hundred thousand people each year.



## THE PLANETARIUM: MICE SPACE

It has an auditorium and a spacious room for projections on a huge dome that provides a complete picture of the firmament.

The main floor holds the main areas of for cultural activities:

- Ⓢ **The Auditorium**, has a capacity of 240 people, and hosts numerous lecture series and round tables.
- Ⓢ **The Tornamira projection room** has sophisticated projection systems to show stars, planets, and images of all kinds, including video and special effects.
- Ⓢ **In addition to the central projector, the room features 50 slide projectors and twenty special effects controlled by computer systems.** All this sophisticated technology is complemented by the possibility of projecting moving images moving through three video beamers.





# REFENA Navarre Fairground

Contact: Carla Garcia-Tapia

+34 948 136 136

carla@rzunzarren.com

www.refena.es

A strategically located space for business, relations and exchange supported by a professional team. It goes beyond a mere fairground as its modular layout and ready adaptability allow it to fulfil different functions, making it the perfect venue to any event.

## A LARGE MULTI-PURPOSE SPACE

Refena goes beyond a mere fairground as its modular layout and ready adaptability allow it to fulfil different functions, making it the perfect venue to any event. It has a surface area of 15,000 m<sup>2</sup> distributed in three pavilions located on a plot covering over 27,000 m<sup>2</sup>. As fairground, it has a minimum covered exhibition area of 11,000 m<sup>2</sup>. It is equipped with all the complementary services and is highly user friendly.

# 27.000 M<sup>2</sup>

PARA LO QUE TÚ QUIERAS



Refena is located inside the city of Pamplona and consists of three adjoining pavilions totalling a useful area of almost 15,000 m<sup>2</sup>. Additionally, there is an adjoining area with a surface area of approximately 1,500 m<sup>2</sup> that houses offices, a reception hall, a restaurant and other complementary services for activities.

Both pavilions are 8.50 m high at the ceiling's lowest point. Their dimensions and versatility make them ideal for any **type of event**: fairs and presentations of any type of product, concerts, sports events, training courses, business meetings...





# GAYARRE THEATRE

Contact: César San Martín

+34 948 207 202

programacion@teatrogayarre.com

www.teatrogayarre.com

Teatro Gayarre is unquestionably the most emblematic playhouse and one of the most established buildings in Pamplona. Located in the very heart of the capital, it now marks the beginning of its Segundo Ensanche district and is an indispensable part of cultural life in the city.



In order to reconstruct the history of Teatro Gayarre, it is necessary to go back to 1841, the year in which Teatro Principal opened its doors in Pamplona's Plaza de la Constitución (now Plaza del Castillo) to replace the old Patio y Casa de Comedias, which had been located in the street of the same name since 1608. The theatre retained the name of Teatro Principal until 1903, when it was renamed Teatro Gayarre in memory of the famous Roncal-born tenor, who had died in 1890. From the moment in which the demolition of the city walls gave way to the urban extension of Pamplona and the Segundo Ensanche, the future of the theatre was in

peril, but in 1931 it was torn down and relocated to the site it now occupies in Avenida Carlos III.

Although remodelled several times, Teatro Gayarre still retains its Italian-style horseshoe floorplan. Inside, the building has four floors. The ground floor is home to the foyer and, inside the house itself, the stalls, with seats for 438 people. It also contains the stage (and the orchestra pit) and the backstage area, itself on three levels.

The first floor of the building, with capacity for 105, leads to the dress circle. The second floor, the upper circle, can seat 174 and a further 44 with a limited view of the stage. The theatre has yet another floor, the gallery (seating 118), which was restored and reopened to the public after the work carried out in the spring-summer of 2005.

**As well as all kinds of stage shows, Gayarre Theatre also offers diverse services for different events.**







# CENTRO DE ESQUÍ LARRA-BELAGUA

Contact: Ana Lusarreta

+34 948 394 062

info@esquilarrabelagua.com

www.esquilarrabelagua.com

A different place for company seminars with your employees.



ORGANISE YOUR SEMINARS IN AN UNBEATABLE SETTING, WITH ALL THE NECESSARY SERVICES AND SPACES FOR WORK AND LEISURE MOMENTS.

Flexibility is the basis of **Larra-Belagua**; **design your own company seminars with the best timetables**. We provide you with options for accommodation, a restaurant for lunches and dinners, monitors for snow sports, meeting rooms, a variety of complementary activities for leisure or company training... all on the premises of Larra-Belagua.



## Complementary activities to include in your company seminars:

### TRAINING ACTIVITIES

- Professional advice
- Gamification
- English for business
- Coaching
- Communication
- Teamwork
- Other training, of whatever kind, on request

### LEISURE AND SPORTS ACTIVITIES

- Cooking workshop
- Cocktails workshop
- Excursions
- Lunch/dinner in a cider house
- Mountain bike route through the area
- Interpretative trekking
- Trekking routes
- Climbing

### ADDITIONAL SERVICES

- Catering service for events
- Transport

### MADE-TO-MEASURE COMPLEMENTARY ACTIVITIES

In addition to the above, you can request other made-to-measure activities. Just let us know what activity you require and we will organise it.



# CIRCUIT OF NAVARRA

Contact: Inma Lezana

+34 948 640 350

inma@circuitodenavarra.com

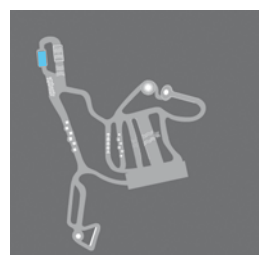
www.circuitodenavarra.com.

Your projects and your company will be on the **podium**.



## Tracks

**The all-new Navarra Circuit is the only race track in north western Spain and is a multi-purpose motor sports facility with a comprehensive array of the latest thinking in circuit design and planning. There are five tracks.**



### OFF-ROAD

We offer an off-road area for a variety of specialities; an autocross track for competition and leisure; and a 4x4 course to get started with all-terrain driving.



### AUTOCROSS



### KARTING TRACK

Outdoor, 731 meter-long kart racetrack. A fleet of 40 karts are available for children and adults. Permanent track lighting, conference rooms, dressing rooms, maintenance and kart storage services are available.



ATALAYA CENTRE

TORRE DE CONTROL

EDIFICIO DE BOXES



### SLIPPERY SURFACE TRACK

14,000 m<sup>2</sup> track with an irrigating system to simulate wet surface conditions. Used for tests and wet-handling safety courses. For group education and corporate events.

### MAIN CIRCUIT

4-kilometre long track with FIA TI certification (F1 equivalence) and category B status for motorcycles approved by the FIM. The main straight is 800 metres long and the track has 15 corners (6 left-hand and 9 right-hand).







# SENDAVIVA

Contact: Ana Marta Torres

+34 948 088 100

atorres@sendaviva.com

www.sendaviva.com

A different place for professional events!

***Sendaviva is a unique space for the celebration of congresses, events for companies, conventions...***

***We are capable of creating any kind of event you can imagine.***



## BUSINESS MEETINGS IN A UNIQUE NATURAL SETTING

The park offers its unique natural entourage and its various facilities to companies, associations or entities wishing to organise events, meetings or workshops and activities with a "twist".

It has facilities tailored to the needs of its clients. Sendaviva has seven, suitably-equipped work rooms in different locations in the Park with capacities ranging from 25 to 100 people. In all of them you can organise and host all kinds of events, business meetings, workshops, presentations, press conferences, etc.

In addition, Sendaviva offers full-service restaurants and catering adapted to client requirements wide range of menus, coffees, snacks, etc.

Sendaviva offers a unique opportunity for companies to combine working sessions or meetings with leisure activities, attractions, shows and the park's great animal family.

In addition to working sessions, Sendaviva is the perfect choice to celebrate company get-togethers, enjoying visits to the park, which can be opened exclusively for companies. The park also provides additional activities to round off your working or leisure day (paint ball, gymkhanas, sweepstakes, etc.) all of them adapted to client requirements.



# PAMPLONA HOTELS



There are over **2600 rooms** distributed in **38 establishments**, the vast majority of which are in the city centre, close to the major MICE infrastructures in the capital of Navarre.



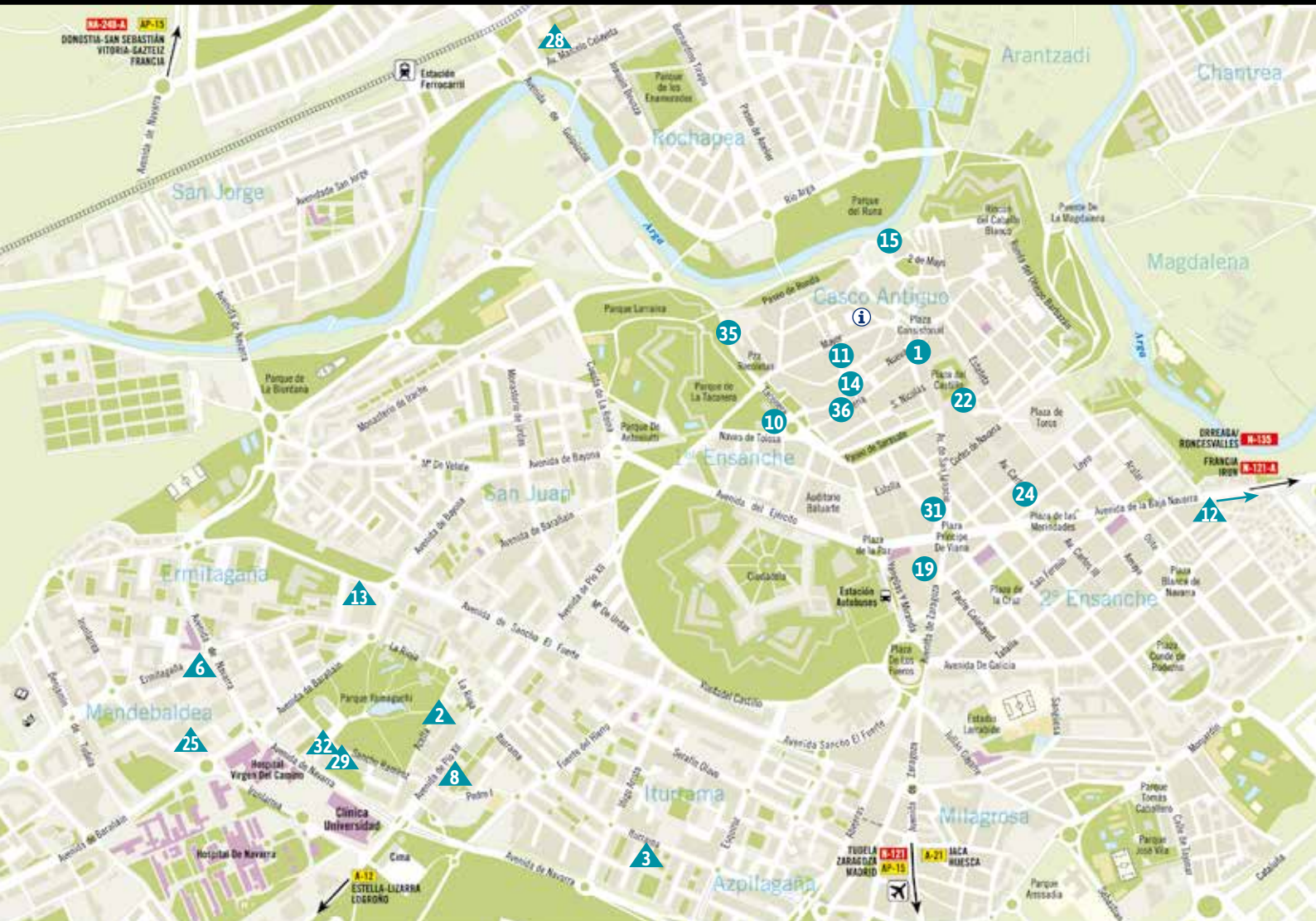
*Pamplona welcomes visitors with a wide range of hotels, hostels, pensions and apartments throughout the city, allowing them to enjoy an environment tailored to each visitor, full of green spaces and free of crowds at any time of the year.*

*The tranquillity offered by the city is an opportunity to savour the route of the Running of the Bulls during the Sanfermines and feel the tension of the race on the corner of Mercaderes and Estafeta.*



*The visit to Pamplona closes with a wide range of leisure, cultural and nature activities.*





1	GRAN HOTEL LA PERLA****	23
2	ABBA REINO DE NAVARRA****	23
3	AC CIUDAD DE PAMPLONA****	23
4	AC ZIZUR MAYOR****	24
5	AH SAN FERMÍN PAMPLONA****	24
6	ALBRET****	24
7	ANDÍA****	25
8	BLANCA DE NAVARRA****	25
9	CASTILLO DE GORRAIZ GOLF & SPA****	25
10	IRUÑA PALACE TRES REYES****	26
11	MAISONNAVE****	26
12	MUGA DE BELOSO****	26
13	NH IRUÑA PARK ****	27
14	PALACIO GUENDULÁIN****	27
15	PAMPLONA CATEDRAL ****	27
16	PAMPLONA EL TORO ****	28
17	ZENIT PAMPLONA****	28
18	AGORRETA***	28
19	AVENIDA***	29
20	BED 4U PAMPLONA**	29
21	CASA AZCONA**	29
22	EUROPA**	30
23	IRIGUIBEL **	30
24	LEYRE**	30
25	MENDEBALDEA (Apartamentos)**	31
26	NH AGUSTINOS**	31
27	NR NOÁIN**	31



- **Old town /Centre**
- ▲ **Neighbourhood** (between 5 and 10 minutes by car to the centre)
- **Metropolitan Area** (between 10 and 20 minutes by car to the centre)

28	PAMPLONA PLAZA***	32
29	SANCHO RAMÍREZ***	32
30	VILLAVA***	32
31	YOLDI***	33
32	A PAMPLONA**	33
33	ALAIZ**	33
34	DON CARLOS**	34
35	ESLAVA**	34
36	CASTILLO DE JAVIER*	34



## GRAN HOTEL LA PERLA

PAMPLONA

Plaza del Castillo, 1 - 31001 Pamplona  
Tel. 948 223 000 - Fax: 948 222 324  
[informacion@granhotellaperla.com](mailto:informacion@granhotellaperla.com)  
[www.granhotellaperla.com](http://www.granhotellaperla.com)



CATEGORY	ROOMS NUMBER	CAPACITY	LOCATION	RESTAU- RANT	COFFE SHOP	BREAKFAST	ROOM			HOTEL				HALLS	
							WIFI	Work Table	Hair Dryer	Parking	Gym	SPA	Swimming pool	Halls number	Max. Capacity
*****	44	87	●	✓	✓	✓	✓	✓	✓	✓				3	60

## ABBA REINO DE NAVARRA

PAMPLONA

C/ Acella, 1 - 31008 Pamplona  
Tel. 948 177 575 - Fax: 948 177 778  
[pamplona@abbahoteles.com](mailto:pamplona@abbahoteles.com)  
[www.abbahoteles.com](http://www.abbahoteles.com)



CATEGORY	ROOMS NUMBER	CAPACITY	LOCATION	RESTAU- RANT	COFFE SHOP	BREAKFAST	ROOM			HOTEL				HALLS	
							WIFI	Work Table	Hair Dryer	Parking	Gym	SPA	Swimming pool	Halls number	Max. Capacity
****	88	176	▲		✓	✓	✓	✓	✓	✓				4	170

## AC CIUDAD DE PAMPLONA

PAMPLONA

C/ Iturrama, 21 - 31007 Pamplona  
Tel. 948 266 011 - Fax: 948 173 626  
[cpamplona@ac-hotels.com](mailto:cpamplona@ac-hotels.com)  
[www.ac-hotels.com](http://www.ac-hotels.com)



CATEGORY	ROOMS NUMBER	CAPACITY	LOCATION	RESTAU- RANT	COFFE SHOP	BREAKFAST	ROOM			HOTEL				HALLS	
							WIFI	Work Table	Hair Dryer	Parking	Gym	SPA	Swimming pool	Halls number	Max. Capacity
****	108	178	▲	✓	✓	✓	✓	✓	✓	✓	✓			3	100





## AC ZIZUR MAYOR

ZIZUR MAYOR

C/ Etxesakan, 3 - 31180 Zizur Mayor  
Tel 948 287 119 - Fax 948 287 180  
[aczizurmayer@ac-hotels.com](mailto:aczizurmayer@ac-hotels.com)  
[www.ac-hotels.com](http://www.ac-hotels.com)



CATEGORY	ROOMS NUMBER	CAPACITY	LOCATION	RESTAU- RANT	COFFE SHOP	BREAKFAST	ROOM			HOTEL				HALLS	
							WIFI	Work Table	Hair Dryer	Parking	Gym	SPA	Swimming pool	Halls number	Max. Capacity
****	73	140		✓	✓	✓	✓	✓	✓	✓	✓			4	250

## AH SAN FERMÍN PAMPLONA

BURLADA

Avda. Villava, 90 (Rotonda Burlada)  
31600 Burlada  
Tel. 948 136 000 - Fax 948 136 010  
[info@ahsanfermin.com](mailto:info@ahsanfermin.com)  
[www.ahsanfermin.com](http://www.ahsanfermin.com)

Coordenadas:

42° 49', 51'' Latitud Sur/Norte  
10° 37', 10'' Longitud Oeste/Este



CATEGORY	ROOMS NUMBER	CAPACITY	LOCATION	RESTAU- RANT	COFFE SHOP	BREAKFAST	ROOM			HOTEL				HALLS	
							WIFI	Work Table	Hair Dryer	Parking	Gym	SPA	Swimming pool	Halls number	Max. Capacity
****	83	163			✓	✓	✓	✓	✓	✓				3	200

## ALBRET

PAMPLONA

C/ Ermitagaña, 3 - 31008 Pamplona  
Tel. 948 172 233 - Fax 948 178 384  
[reservas@hotelalbret.com](mailto:reservas@hotelalbret.com)  
[www.hotelalbret.com](http://www.hotelalbret.com)



CATEGORY	ROOMS NUMBER	CAPACITY	LOCATION	RESTAU- RANT	COFFE SHOP	BREAKFAST	ROOM			HOTEL				HALLS	
							WIFI	Work Table	Hair Dryer	Parking	Gym	SPA	Swimming pool	Halls number	Max. Capacity
****	106	212		✓	✓	✓	✓	✓	✓	✓	✓			4	237



## ANDÍA

ORKOIEN

C/ Ipertegui s/n - 31160 Orkoien  
Tel. 948 325 075 - Fax 948 325 053  
[info@hotelandia.com](mailto:info@hotelandia.com)  
[www.hotelandia.com](http://www.hotelandia.com)



CATEGORY	ROOMS NUMBER	CAPACITY	LOCATION	RESTAU- RANT	COFFE SHOP	BREAKFAST	ROOM			HOTEL				HALLS	
							WIFI	Work Table	Hair Dryer	Parking	Gym	SPA	Swimming pool	Halls number	Max. Capacity
****	122	243	■	✓	✓	✓	✓	✓	✓	✓	✓			6	695

## BLANCA DE NAVARRA

PAMPLONA

Avda. Pío XII, 43 - 31008 Pamplona  
Tel. 948 171 010 - Fax 948 175 414  
[reservas@hotelblancadenavarra.com](mailto:reservas@hotelblancadenavarra.com)  
[www.hotelblancadenavarra.com](http://www.hotelblancadenavarra.com)



CATEGORY	ROOMS NUMBER	CAPACITY	LOCATION	RESTAU- RANT	COFFE SHOP	BREAKFAST	ROOM			HOTEL				HALLS	
							WIFI	Work Table	Hair Dryer	Parking	Gym	SPA	Swimming pool	Halls number	Max. Capacity
****	102	204	▲	✓	✓	✓	✓	✓	✓	✓	✓			7	310

## CASTILLO DE GORRAIZ GOLF & SPA

GORRAIZ

Avda. de Egüés, 78 - 31620 Gorraiz  
Tel. 948 33 77 22 - Fax 948 34 88 00  
[reservas@cghotel.es](mailto:reservas@cghotel.es)  
[www.cghotel.es](http://www.cghotel.es)



CATEGORY	ROOMS NUMBER	CAPACITY	LOCATION	RESTAU- RANT	COFFE SHOP	BREAKFAST	ROOM			HOTEL				HALLS	
							WIFI	Work Table	Hair Dryer	Parking	Gym	SPA	Swimming pool	Halls number	Max. Capacity
****	46	91	■	✓	✓	✓	✓	✓	✓	✓	✓	✓	✓	3	146





## IRUÑA PALACE TRES REYES

PAMPLONA

Jardines de la Taconera s/n - 31001 Pamplona

Tel. 948 226 600 - Fax 948 222 930

[reserv@hotel3reyes.com](mailto:reserv@hotel3reyes.com)

[www.hotel3reyes.com](http://www.hotel3reyes.com)



\* July and August

CATEGORY	ROOMS NUMBER	CAPACITY	LOCATION	RESTAU- RANT	COFFE SHOP	BREAKFAST	ROOM			HOTEL				HALLS	
							WIFI	Work Table	Hair Dryer	Parking	Gym	SPA	Swimming pool	Halls number	Max. Capacity
****	160	245	●	✓	✓	✓	✓	✓	✓	✓	✓		✓ *	9	1800

## MAISONNAVE

PAMPLONA

C/ Nueva, 20 - 31001 Pamplona

Tel. 948 222 600 - Fax 948 220 166

[informacion@hotelmaisonnave.es](mailto:informacion@hotelmaisonnave.es)

[www.hotelmaisonnave.es](http://www.hotelmaisonnave.es)



CATEGORY	ROOMS NUMBER	CAPACITY	LOCATION	RESTAU- RANT	COFFE SHOP	BREAKFAST	ROOM			HOTEL				HALLS	
							WIFI	Work Table	Hair Dryer	Parking	Gym	SPA	Swimming pool	Halls number	Max. Capacity
****	147	271	●	✓	✓	✓	✓	✓	✓	✓	✓			1	120

## MUGA DE BELOSO

PAMPLONA

C/ Beloso Bajo, 11 - 31006 Pamplona

Tel. 948 293 380 - Fax: 948 293 381

[info@almapamplona.com](mailto:info@almapamplona.com)

[www.almahotels.com](http://www.almahotels.com)

Coordenadas:

42,810 Latitud Sur/Norte

-1,620 Longitud Oeste/Este



CATEGORY	ROOMS NUMBER	CAPACITY	LOCATION	RESTAU- RANT	COFFE SHOP	BREAKFAST	ROOM			HOTEL				HALLS	
							WIFI	Work Table	Hair Dryer	Parking	Gym	SPA	Swimming pool	Halls number	Max. Capacity
****	58	116	▲	✓	✓	✓	✓	✓	✓	✓	✓	✓	✓	3	390



## NH IRUÑA PARK

PAMPLONA

C/ Arcadio M<sup>a</sup> Larraona, 1 - 31008 Pamplona  
Tel. 948 197 119 - Fax 948 172 387  
[nhirunapark@nh-hotels.com](mailto:nhirunapark@nh-hotels.com)  
[www.nh-hotels.com](http://www.nh-hotels.com)



CATEGORY	ROOMS NUMBER	CAPACITY	LOCATION	RESTAURANT	COFFE SHOP	BREAKFAST	ROOM			HOTEL				HALLS	
							WIFI	Work Table	Hair Dryer	Parking	Gym	SPA	Swimming pool	Halls number	Max. Capacity
****	225	420	▲											15	1550

## PALACIO GUENDULÁIN

PAMPLONA

C/ Zapatería, 53 - 31001 Pamplona  
Tel. 948 22 55 22 - Fax 948 22 55 32  
[info@palacioguendulain.com](mailto:info@palacioguendulain.com)  
[www.palacioguendulain.com](http://www.palacioguendulain.com)



CATEGORY	ROOMS NUMBER	CAPACITY	LOCATION	RESTAURANT	COFFE SHOP	BREAKFAST	ROOM			HOTEL				HALLS	
							WIFI	Work Table	Hair Dryer	Parking	Gym	SPA	Swimming pool	Halls number	Max. Capacity
****	26	52	●	✓	✓	✓	✓	✓	✓	✓				5	200

## PAMPLONA CATEDRAL

PAMPLONA

C/ Dos de Mayo, 4 - 31001 Pamplona  
Tel. 948 22 66 88 - Fax 948 22 66 89  
[info@pamplonacatedralhotel.com](mailto:info@pamplonacatedralhotel.com)  
[www.pamplonacatedralhotel.com](http://www.pamplonacatedralhotel.com)



CATEGORY	ROOMS NUMBER	CAPACITY	LOCATION	RESTAURANT	COFFE SHOP	BREAKFAST	ROOM			HOTEL				HALLS	
							WIFI	Work Table	Hair Dryer	Parking	Gym	SPA	Swimming pool	Halls number	Max. Capacity
****	59	104	●	✓	✓	✓	✓	✓	✓	✓				4	250





## PAMPLONA EL TORO

BERRIOPLANO

Ctra. de Guipúzcoa, km. 5 - 31195 Berrioplano  
Tel. 948 302 211  
[reservas@hotelpamplonaeltoro.com](mailto:reservas@hotelpamplonaeltoro.com)  
[www.hotelpamplonaeltoro.com](http://www.hotelpamplonaeltoro.com)



CATEGORY	ROOMS NUMBER	CAPACITY	LOCATION	RESTAURANT	COFFE SHOP	BREAKFAST	ROOM			HOTEL				HALLS	
							WIFI	Work Table	Hair Dryer	Parking	Gym	SPA	Swimming pool	Halls number	Max. Capacity
****	62	118		✓	✓	✓	✓	✓	✓	✓	✓	✓		8	954

## ZENIT PAMPLONA

CORDOVILLA

Parque Comercial Galaria C/X, 1  
31191 Cordovilla - Cendea de Galar  
Tel. 948 292 600. Fax: 948 292 601.  
[www.zenithoteles.com](http://www.zenithoteles.com)  
[pamplona@zenithoteles.com](mailto:pamplona@zenithoteles.com)



CATEGORY	ROOMS NUMBER	CAPACITY	LOCATION	RESTAURANT	COFFE SHOP	BREAKFAST	ROOM			HOTEL				HALLS	
							WIFI	Work Table	Hair Dryer	Parking	Gym	SPA	Swimming pool	Halls number	Max. Capacity
****	85	169												7	210

## AGORRETA

SALINAS DE PAMPLONA

31191 Salinas de Pamplona  
Tel. 948 316 900 - Fax 948 316 901  
[info@hotelagorreta.es](mailto:info@hotelagorreta.es)  
[www.hotelagorreta.es](http://www.hotelagorreta.es)



CATEGORY	ROOMS NUMBER	CAPACITY	LOCATION	RESTAURANT	COFFE SHOP	BREAKFAST	ROOM			HOTEL				HALLS	
							WIFI	Work Table	Hair Dryer	Parking	Gym	SPA	Swimming pool	Halls number	Max. Capacity
***	24	47				✓	✓	✓	✓	✓					



## AVENIDA

PAMPLONA

Avda. Zaragoza, 5 - 31003 Pamplona

Tel. 948 245 454 - Fax 948 232 323

[info@avenidahoteles.es](mailto:info@avenidahoteles.es)

[www.avenidahoteles.es](http://www.avenidahoteles.es)



CATEGORY	ROOMS NUMBER	CAPACITY	LOCATION	RESTAURANT	COFFE SHOP	BREAKFAST	ROOM			HOTEL				HALLS	
							WIFI	Work Table	Hair Dryer	Parking	Gym	SPA	Swimming pool	Halls number	Max. Capacity
***	26	48				✓	✓	✓	✓	✓					

## BED 4U PAMPLONA

CORDOVILLA

Carretera de Zaragoza Km. 3 - Pamplona

Tel. 948 292 808 - Whatsapp: 682 795 619

[pamplona@bed4uhotels.com](mailto:pamplona@bed4uhotels.com)

[www.bed4uhotels.com/hoteles/hotel-bed4u-pamplona/](http://www.bed4uhotels.com/hoteles/hotel-bed4u-pamplona/)



CATEGORY	ROOMS NUMBER	CAPACITY	LOCATION	RESTAURANT	COFFE SHOP	BREAKFAST	ROOM			HOTEL				HALLS	
							WIFI	Work Table	Hair Dryer	Parking	Gym	SPA	Swimming pool	Halls number	Max. Capacity
***	74	93		✓	✓	✓	✓	✓		✓	✓			1	35

## CASA AZCONA

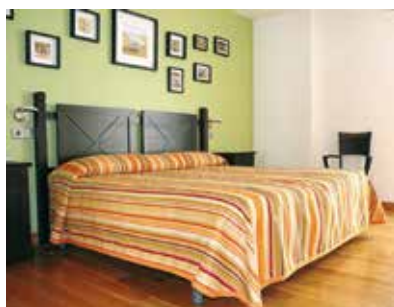
ZIZUR MAYOR

Avda. Belascoain, 24 - 31180 Zizur Mayor

Tel. 948 287 662 - Fax 948 287 663

[info@hotelcasaaazona.com](mailto:info@hotelcasaaazona.com)

[www.hotelcasaaazona.com](http://www.hotelcasaaazona.com)



CATEGORY	ROOMS NUMBER	CAPACITY	LOCATION	RESTAURANT	COFFE SHOP	BREAKFAST	ROOM			HOTEL				HALLS	
							WIFI	Work Table	Hair Dryer	Parking	Gym	SPA	Swimming pool	Halls number	Max. Capacity
***	21	34		✓	✓	✓	✓	✓	✓	✓				2	23





## EUROPA

### PAMPLONA

C/ Espoz y Mina, 11 - 31001 Pamplona  
Tel. 948 221 800 - Fax 948 229 235  
[europa@hreuropa.com](mailto:europa@hreuropa.com)  
[www.hreuropa.com](http://www.hreuropa.com)



CATEGORY	ROOMS NUMBER	CAPACITY	LOCATION	RESTAURANT	COFFE SHOP	BREAKFAST	ROOM			HOTEL				HALLS	
							WIFI	Work Table	Hair Dryer	Parking	Gym	SPA	Swimming pool	Halls number	Max. Capacity
***	21	38	●	✓		✓	✓	✓	✓	✓					

## IRIGUIBEL

### HUARTE-PAMPLONA

C/ Intxaurdia, 4 - 31620 Huarte-Pamplona  
Tel. 948 361 190 - Fax 948 332 232  
[hoteliriguibel@hoteliriguibel.com](mailto:hoteliriguibel@hoteliriguibel.com)  
[www.hoteliriguibel.com](http://www.hoteliriguibel.com)



CATEGORY	ROOMS NUMBER	CAPACITY	LOCATION	RESTAURANT	COFFE SHOP	BREAKFAST	ROOM			HOTEL				HALLS	
							WIFI	Work Table	Hair Dryer	Parking	Gym	SPA	Swimming pool	Halls number	Max. Capacity
***	37	68	■		✓	✓	✓	✓	✓	✓	✓	✓	✓	1	30

## LEYRE

### PAMPLONA

C/ Leyre, 7 - 31002 Pamplona  
Tel. 948 228 500 - Fax 948 228 318  
[reservas@hotel-leyre.com](mailto:reservas@hotel-leyre.com)  
[www.hotel-leyre.com](http://www.hotel-leyre.com)



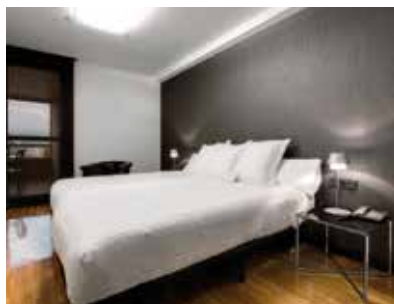
CATEGORY	ROOMS NUMBER	CAPACITY	LOCATION	RESTAURANT	COFFE SHOP	BREAKFAST	ROOM			HOTEL				HALLS	
							WIFI	Work Table	Hair Dryer	Parking	Gym	SPA	Swimming pool	Halls number	Max. Capacity
***	55	101	●			✓	✓	✓	✓		✓				



## MENDEBALDEA (APARTAMENTOS)

PAMPLONA

C/ Irunlarrea, 6 - 31008 Pamplona  
Tel. 948 179 300 - Fax 948 179 334  
[mendebaldea@mendebaldea.com](mailto:mendebaldea@mendebaldea.com)  
[www.mendebaldea.com](http://www.mendebaldea.com)



CATEGORY	ROOMS NUMBER	CAPACITY	LOCATION	RESTAURANT	COFFE SHOP	BREAKFAST	ROOM			HOTEL				HALLS	
							WIFI	Work Table	Hair Dryer	Parking	Gym	SPA	Swimming pool	Halls number	Max. Capacity
***	62	228	▲			✓	✓	✓	✓	✓					

## NH AGUSTINOS

BERRIOPLANO

Reservas NH: +34 902 570 368

Polígono Industrial Agustinos c/B  
31013 Pamplona  
Tel. 948307560 -  
[nhagustinos@nh-hotels.com](mailto:nhagustinos@nh-hotels.com)  
[www.nh-hotels.com](http://www.nh-hotels.com)



CATEGORY	ROOMS NUMBER	CAPACITY	LOCATION	RESTAURANT	COFFE SHOP	BREAKFAST	ROOM			HOTEL				HALLS	
							WIFI	Work Table	Hair Dryer	Parking	Gym	SPA	Swimming pool	Halls number	Max. Capacity
***	60	118	■											5	220

## NR NOÁIN

NOÁIN

C/ Real s/n - 31110 Noáin  
Tel. 948 316 610 - Fax 948 316 616  
[info@hotelnoain.com](mailto:info@hotelnoain.com)  
[www.hotelnoain.com](http://www.hotelnoain.com)



CATEGORY	ROOMS NUMBER	CAPACITY	LOCATION	RESTAURANT	COFFE SHOP	BREAKFAST	ROOM			HOTEL				HALLS	
							WIFI	Work Table	Hair Dryer	Parking	Gym	SPA	Swimming pool	Halls number	Max. Capacity
****	60	102	■											1	120





## PAMPLONA PLAZA

### PAMPLONA

Avda. Marcelo Celayeta, 35 - 31014 Pamplona  
Tel. 948 136 012 - Fax 948 136 282  
[reservas@hotelpamplonaplaza.com](mailto:reservas@hotelpamplonaplaza.com)  
[www.hotelpamplonaplaza.com](http://www.hotelpamplonaplaza.com)



CATEGORY	ROOMS NUMBER	CAPACITY	LOCATION	RESTAURANT	COFFE SHOP	BREAKFAST	ROOM			HOTEL				HALLS	
							WIFI	Work Table	Hair Dryer	Parking	Gym	SPA	Swimming pool	Halls number	Max. Capacity
***	38	50	▲		✓	✓	✓	✓	✓	✓					

## SANCHO RAMÍREZ

### PAMPLONA

C/ Sancho Ramírez, 11- 31008 Pamplona  
Tel. 948 271 712 Fax 948 171 143  
[reservas@hotelsanchoramirez.com](mailto:reservas@hotelsanchoramirez.com)  
[www.hotelsanchoramirez.com](http://www.hotelsanchoramirez.com)



CATEGORY	ROOMS NUMBER	CAPACITY	LOCATION	RESTAURANT	COFFE SHOP	BREAKFAST	ROOM			HOTEL				HALLS	
							WIFI	Work Table	Hair Dryer	Parking	Gym	SPA	Swimming pool	Halls number	Max. Capacity
***	86	153	▲	✓	✓	✓	✓	✓	✓	✓	✓			3	175

## VILLAVA

### VILLAVA

Avda. de Pamplona s/n - 31610 Villava  
Tel. 948 333 676 - Fax 948 333 675  
[recep@hotelvillava.com](mailto:recep@hotelvillava.com)  
[www.hotelvillava.com](http://www.hotelvillava.com)



CATEGORY	ROOMS NUMBER	CAPACITY	LOCATION	RESTAURANT	COFFE SHOP	BREAKFAST	ROOM			HOTEL				HALLS	
							WIFI	Work Table	Hair Dryer	Parking	Gym	SPA	Swimming pool	Halls number	Max. Capacity
***	62	115	■	✓	✓	✓	✓	✓	✓	✓	✓			3	240



## YOLDI

PAMPLONA

Avda. San Ignacio, 11 - 31002 Pamplona

Tel. 948 224 800 - Fax 948 212 045

[yoldi@hotelyoldi.com](mailto:yoldi@hotelyoldi.com)

[www.hotelyoldi.com](http://www.hotelyoldi.com)



CATEGORY	ROOMS NUMBER	CAPACITY	LOCATION	RESTAURANT	COFFE SHOP	BREAKFAST	ROOM			HOTEL				HALLS	
							WIFI	Work Table	Hair Dryer	Parking	Gym	SPA	Swimming pool	Halls number	Max. Capacity
***	49	72	●	✓	✓	✓	✓	✓	✓						

## A PAMPLONA

PAMPLONA

Sancho Ramírez, 15 – 31008 Pamplona

Tel. 948 272 975

[info@hotelapamplona.es](mailto:info@hotelapamplona.es)

[www.hotelapamplona.es](http://www.hotelapamplona.es)



CATEGORY	ROOMS NUMBER	CAPACITY	LOCATION	RESTAURANT	COFFE SHOP	BREAKFAST	ROOM			HOTEL				HALLS	
							WIFI	Work Table	Hair Dryer	Parking	Gym	SPA	Swimming pool	Halls number	Max. Capacity
**	12	24	▲			✓	✓	✓	✓						

## ALAIZ

BERIÁIN

Ctra. Zaragoza, nº 1, Km. 9 - 31191 Beriáin

Tel. 948 310 175 - Fax 948 310 350

[reserva@hotelalaiz.com](mailto:reserva@hotelalaiz.com)

[www.hotelalaiz.com](http://www.hotelalaiz.com)



CATEGORY	ROOMS NUMBER	CAPACITY	LOCATION	RESTAURANT	COFFE SHOP	BREAKFAST	ROOM			HOTEL				HALLS	
							WIFI	Work Table	Hair Dryer	Parking	Gym	SPA	Swimming pool	Halls number	Max. Capacity
**	70	128	■	✓	✓	✓	✓	✓	✓	✓	✓			2	160





## DON CARLOS

HUARTE-PAMPLONA

C/ Dorraburu, 1 - 31620 Huarte  
Tel. 948 330 077 - Fax: 948 330 239  
[infohotel@hdoncarlos.com](mailto:infohotel@hdoncarlos.com)  
[www.hdoncarlos.com](http://www.hdoncarlos.com)

Latitud: -1.60136  
Longitud: 42.82986



CATEGORY	ROOMS NUMBER	CAPACITY	LOCATION	RESTAURANT	COFFE SHOP	BREAKFAST	ROOM			HOTEL				HALLS	
							WIFI	Work Table	Hair Dryer	Parking	Gym	SPA	Swimming pool	Halls number	Max. Capacity
**	30	47	■	✓	✓	✓	✓	✓	✓	✓				4	800

## ESLAVA

PAMPLONA

Plaza Virgen de la O, 7 - 31001 Pamplona  
Tel. 948 222 270 - Fax 948 225 157  
[correo@hotel-eslava.com](mailto:correo@hotel-eslava.com)  
[www.hotel-eslava.com](http://www.hotel-eslava.com)



CATEGORY	ROOMS NUMBER	CAPACITY	LOCATION	RESTAURANT	COFFE SHOP	BREAKFAST	ROOM			HOTEL				HALLS	
							WIFI	Work Table	Hair Dryer	Parking	Gym	SPA	Swimming pool	Halls number	Max. Capacity
**	27	42	●												

## CASTILLO DE JAVIER

PAMPLONA

C/ San Nicolás, 50-52 - 31001 Pamplona  
Tel. 948 203 040 - Fax 948 203 041  
[info@hotelcastillodejavier.com](mailto:info@hotelcastillodejavier.com)  
[www.hotelcastillodejavier.com](http://www.hotelcastillodejavier.com)



CATEGORY	ROOMS NUMBER	CAPACITY	LOCATION	RESTAURANT	COFFE SHOP	BREAKFAST	ROOM			HOTEL				HALLS	
							WIFI	Work Table	Hair Dryer	Parking	Gym	SPA	Swimming pool	Halls number	Max. Capacity
*	18	22	●	✓	✓	✓	✓	✓	✓	✓					



# TUDELA, CITY OF CONFERENCES

Contact: Tourist attention

+34 848 420 420

turismo@navarra.es

www.turismo.navarra.es



To the south of Navarre, nestled between the overwhelming aridity of the Bardenas and the intense greenery of the Ribera vegetable plot, is Tudela, the second city in the autonomous community in terms of size and importance.



Is it **one of the most important cities of Islamic origin in Spain and Europe**, and where for over 400 years, Muslims, Jews and Mozarabs lived together, giving the city its cultural mixture seen today in its monumental building, narrow winding streets, passageways, walls and watchtowers.

Tudela is a place where history is combined with the very best gastronomy, with centre stage going to the **exquisite vegetables from Ribera** – artichokes, asparagus, lettuce hearts, thistle – and the famous vegetable stew (a dish made with artichokes, peas, green beans, asparagus, chard and cured ham). These products are also sold as preserves.



It is also a **land of festivities** and traditions. It celebrates its Patron Saint, Ana, from 24th to 30th July, and the festivities known as El Volatín and the Bajada del Ángel, held in Easter Week are also of particular cultural historical interest.

Tudela is a good starting point for visiting the Bardenas Reales or La Ribera, following the Tarazonica Greenway, or in hotter months, taking a trip to the Sendaviva Theme Park (in Arguedas), which has animals in semi-wild conditions and other attractions.





## AC CIUDAD DE TUDELA BY MARRIOTT

TUDELA

C/ Misericordia s/n  
Tel. 948 402 440  
[ctudela@ac-hotels.com](mailto:ctudela@ac-hotels.com)  
[www.ac-hotels.com](http://www.ac-hotels.com)



CATEGORY	ROOMS NUMBER	CAPACITY	DISTANCE TO CENTER		RESTAU- RANT	COFFE SHOP	BREAKFAST	ROOM			HOTEL				HALLS	
			km	Travel time by car				WIFI	Work Table	Hair Dryer	Parking	Gym	SPA	Swimming pool	Halls number	Max. Capacity
****	42	84	3		✓		✓	✓	✓	✓	✓	✓			4	500

## AIRE

TUDELA

Ctra. Ejea, km 1,5  
Tel. 948 827 990  
[info@hotelaire.com](mailto:info@hotelaire.com)  
[www.airebardenas.com](http://www.airebardenas.com)



CATEGORY	ROOMS NUMBER	CAPACITY	DISTANCE TO CENTER		RESTAU- RANT	COFFE SHOP	BREAKFAST	ROOM			HOTEL				HALLS	
			km	Travel time by car				WIFI	Work Table	Hair Dryer	Parking	Gym	SPA	Swimming pool	Halls number	Max. Capacity
****	22	43			✓	✓	✓	✓	✓	✓	✓			✓	2	120

## SANTAMARÍA

TUDELA

C/ San Marcial 14  
Tel. 948 821 200  
[info@hotelsantamaria.net](mailto:info@hotelsantamaria.net)  
[www.hotelsantamaria.net](http://www.hotelsantamaria.net)



CATEGORY	ROOMS NUMBER	CAPACITY	DISTANCE TO CENTER		RESTAU- RANT	COFFE SHOP	BREAKFAST	ROOM			HOTEL				HALLS	
			km	Travel time by car				WIFI	Work Table	Hair Dryer	Parking	Gym	SPA	Swimming pool	Halls number	Max. Capacity
***	50	70			✓	✓	✓	✓	✓	✓	✓					



# Hotels in Tudela

## TUDELA BARDENAS

TUDELA

Avda. Zaragoza 60  
Tel. 948 410 802  
[hotel@tudelabardenas.com](mailto:hotel@tudelabardenas.com)  
[www.tudelabardenas.com](http://www.tudelabardenas.com)



CATEGORY	ROOMS NUMBER	CAPACITY	DISTANCE TO CENTER		RESTAU- RANT	COFFE SHOP	BREAKFAST	ROOM			HOTEL				HALLS	
			km	Travel time by car				WIFI	Work Table	Hair Dryer	Parking	Gym	SPA	Swimming pool	Halls number	Max. Capacity
***	47	94			✓	✓	✓	✓	✓	✓	✓	✓			6	300

## Hotels by rooms

	TOWN	ACCOMMODATION	CATEGORY	Nº ROOMS	CAPACITY
More than 100 rooms	PAMPLONA	NH IRUÑA PARK	*****	225	420
	ORKOIE	ANDÍA	*****	212	424
	PAMPLONA	IRUÑA PALACE TRES REYES	*****	168	336
	PAMPLONA	MAISONNAVE	*****	147	271
	PAMPLONA	MENDEBALDEA (APARTAMENTOS)	***	114	228
	PAMPLONA	AC CIUDAD DE PAMPLONA	*****	108	178
	PAMPLONA	ALBRET	*****	106	212
From 70 to 100 rooms	PAMPLONA	BLANCA DE NAVARRA	*****	102	204
	PAMPLONA	ABBA REINO DE NAVARRA	*****	88	176
	PAMPLONA	SANCHO RAMÍREZ	***	86	153
	CORDOVILLA	ZENIT PAMPLONA	*****	85	169
	BURLADA	AH SAN FERMÍN PAMPLONA	*****	83	163
	CORDOVILLA	BED 4U PAMPLONA	***	74	93
	ZIZUR MAYOR	AC ZIZUR MAYOR	*****	73	140
From 50 to 69 rooms	BERRIÁIN	ALAIZ	**	70	128
	BERRIOPLANO	PAMPLONA EL TORO	*****	62	118
	VILLAVA	VILLAVA	***	62	115
	BERRIOPLANO	NH AGUSTINOS	***	60	118
	BERRIOPLANO	NH AGUSTINOS	***	60	118
	NOÁIN	NR NOÁIN	***	60	102
	PAMPLONA	PAMPLONA CATEDRAL	*****	59	104
From 25 to 49 rooms	PAMPLONA	MUGA DE BELOSO	*****	58	116
	PAMPLONA	LEYRE	***	55	101
	TUDELA	SANTAMARÍA	***	50	70
	PAMPLONA	YOLDI	***	49	72
	TUDELA	TUDELA BARDENAS	***	47	94
	GORRAIZ	CASTILLO DE GORRAIZ HOTEL GOLF&SPA	*****	46	91
	TUDELA	AC CIUDAD DE TUDELA	*****	42	84
Less than 25 rooms	PAMPLONA	GRAN HOTEL LA PERLA	*****	44	87
	PAMPLONA	PAMPLONA PLAZA	***	38	50
	PAMPLONA	IRIGUIBEL	***	37	68
	HUARTE	DON CARLOS	**	30	47
	PAMPLONA	ESLAVA	**	27	42
	PAMPLONA	PALACIO GUENDULÁIN	*****	26	52
	PAMPLONA	AVENIDA	***	26	48
Less than 25 rooms	SALINAS DE PAMPLONA	AGORRETA	***	24	47
	TUDELA	AIRE	*****	22	43
	ZIZUR MAYOR	CASA AZCONA	***	21	34
	PAMPLONA	EUROPA	***	21	38
	PAMPLONA	CASTILLO DE JAVIER	*	18	22
	PAMPLONA	A PAMPLONA	**	12	24



Information on  
accommodation in Pamplona  
and surrounding area.





# MICE HOTELS

Contact: Tourist attention

+34 848 420 420

turismo@navarra.es

www.turismo.navarra.es

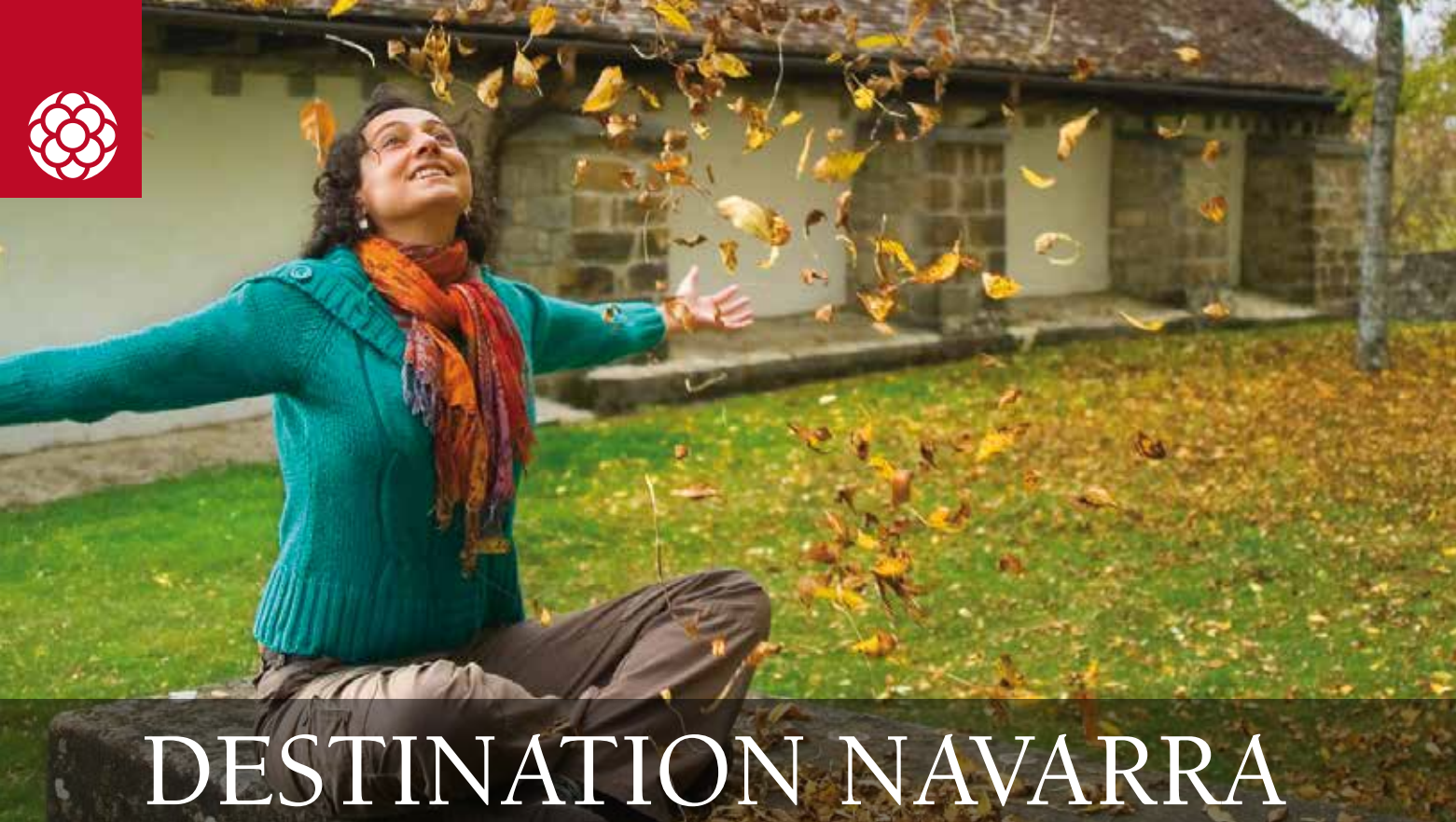
TOWN	ACCOMMODATION	CATEGORY	HALLS	
			HALLS NUMBER	MAX. CAPACITY
PAMPLONA	ABBA REINO DE NAVARRA	*****	4	170
PAMPLONA	AC CIUDAD DE PAMPLONA	*****	3	100
PAMPLONA	ALBRET	*****	4	237
PAMPLONA	BLANCA DE NAVARRA	*****	7	310
PAMPLONA	GRAN HOTEL LA PERLA	*****	3	60
PAMPLONA	IRIGUIBEL	***	1	30
PAMPLONA	IRUÑA PALACE TRES REYES	*****	8	1800
PAMPLONA	MAISONNAVE	*****	1	120
PAMPLONA	MUGA DE BELOSO	*****	3	390
PAMPLONA	NH IRUÑA PARK	*****	15	1550
PAMPLONA	PALACIO GUENDULÁIN	*****	5	200
PAMPLONA	PAMPLONA CATEDRAL	*****	4	250
PAMPLONA	RAMÍREZ	***	3	175
BERIÁIN	ALAIZ	**	2	160
BERRIOPLANO	NH AGUSTINOS	***	5	220
BERRIOPLANO	PAMPLONA EL TORO	*****	8	954
BURLADA	AH SAN FERMÍN PAMPLONA	*****	3	200
CORDOVILLA	BED 4U PAMPLONA	***	1	35
CORDOVILLA	ZENIT PAMPLONA	*****	7	210
GORRAIZ	CASTILLO DE GORRAIZ HOTEL GOLF&SPA	*****	3	146
HUARTE	DON CARLOS	**	4	800
NOÁIN	NR NOÁIN	***	1	120
ORKOIN	ANDÍA	*****	6	695
TUDELA	AC CIUDAD DE TUDELA	*****	4	500
TUDELA	AIRE	*****	2	120
TUDELA	TUDELA BARDENAS	***	6	300
VILLAVA	VILLAVA	***	3	240
ZIZUR MAYOR	AC ZIZUR MAYOR	*****	4	250
ZIZUR MAYOR	CASA AZCONA	***	2	23

**Pamplona and its aerea and Tudela have 29** hotels with a MICE profile. They have meeting rooms suitable for hosting any conference, event or meeting, whatever its nature.

They are all equipped with the technological resources needed to ensure your meeting is a success.







# DESTINATION NAVARRA

NAVARRA	Contact: Tourist attention	+34 848 420 420	turismo@navarra.es	www.turismo.navarra.es
PAMPLONA	Contact: Alberto Tomás	+34 948 420 717	turismo@pamplona.es	www.turismodepamplona.es



**Navarre is one of the regions that scores the highest satisfaction rates from both domestic and foreign tourists.**

**It aspires to be a destination of sustainable, intelligent, dynamic, innovative and high quality tourism which can be enjoyed to the full and promotes the well-being and happiness of everyone who visits the region.**

**In short, what is known in the international tourism sector as a “smart destination.”**

**Navarre** welcomes leisurely travellers; those who enjoy spending quality time in unhurried contemplation and relaxed conversations; those who breathe deeply and relish every moment, who seek and find, who love life.

The natural environment of Navarre, its unique culture, its living history, its carefully-preserved heritage and its native cuisine all guarantee a complete travel experience. Navarre respects its land and its heritage and works hard to improve its natural environment as well as its buildings and monuments. It offers a range of outstanding and highly competitive products along with excellent services throughout the region.







**PAMPLONA** ! Reuniones  
y eventos  
**IRUÑA** Meetings  
and Events



**Pamplona, the capital of Navarre, is a city where modernity and tradition merge together.**

**A quiet city with emblematic spots marked by the Sanfermines and the Way of St. James; Estafeta Street, where you can sense the tension of the Running of the Bulls and the Romanesque bridge of La Magdalena, at the foot of the ramparts, to welcome the pilgrims.**

Founded by Pompey in 75 BC, to whom the city owes its name (Pompeo), Pamplona is today a modern, welcoming city of around 200,000 inhabitants with a wide range of activities: strolling along its cobbled streets between centuries-old walls, relaxing in its many parks and terraces, savouring its delicious tapas and visiting historical monuments are just a few of the activities you can enjoy.

This is a well-planned, pedestrian-friendly and totally walkable city. Green zones share space with pedestrianized sections and shopping areas. Pamplona invites you to enjoy its parks and stroll through its old quarter at your leisure, and entices you with its delicious gastronomy and popular 'pinchos', washed down with excellent wines from the Navarra designation of origin.

It is a green city with a high standard of education and healthcare, yet above all it is a warm city and a land of hospitable people.

**Pamplona** welcomes visitors with a wide range of hotels, hostels, pensions and apartments throughout the city. The city is tailor-made for visitors: full of green spaces and free from overcrowding all year round, except from July 6 to 14 when the Sanfermines take place and the city is taken over by a massive party.

**Forget about the pressures of everyday life** and let time drift by from the comfort of a terrace on Plaza del Castillo at the heart of the historic quarter. It's such a pleasure to watch the world go by while sampling tapas along with a good Navarra D.O. wine, basking in the warm rays of the sun that light up this colourful square.

**The city's peaceful nature** offers an opportunity to experience the route down which the bulls are run during the Sanfermines, imagining the sense of tense excitement at the Mercaderes corner or the emblematic Calle Estafeta.

A visit to Pamplona is rounded off **with a wide range of leisure, cultural and sporting activities**: rock climbing, paragliding, hiking, horse riding, golf...

## A GREEN CITY

The urban landscape of the capital of Navarre cannot be appreciated without its parks and gardens which oxygenate the city with their lush vegetation and welcome walkers looking for a quiet place to stroll.

## MONUMENTS AND HISTORY

Architectural styles, nobility, religious culture, administrative areas, meeting places... one of the best ways of understanding the idiosyncrasies of a city is to visit its most iconic buildings.

## LEISURE AND CULTURE

Pamplona offers a wide range of options to guarantee visitors an unforgettable stay in a superb setting —pleasant and welcoming— that makes visitors feel right at home.

## WALKS AND RUNMAP

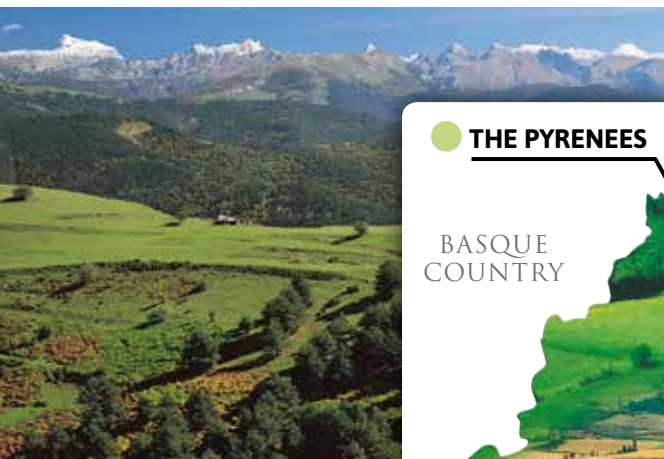
It's time to take off your watch, amble through some of Pamplona's parks such as Ciudadela and Taconera, or let yourself drift along the path that forms part of the Jacobean Way of St. James. Whether walking or running, Pamplona is the ideal city to stretch your legs on a jog through its parks and along its avenues.



## DIVERSITY WITHIN YOUR REACH

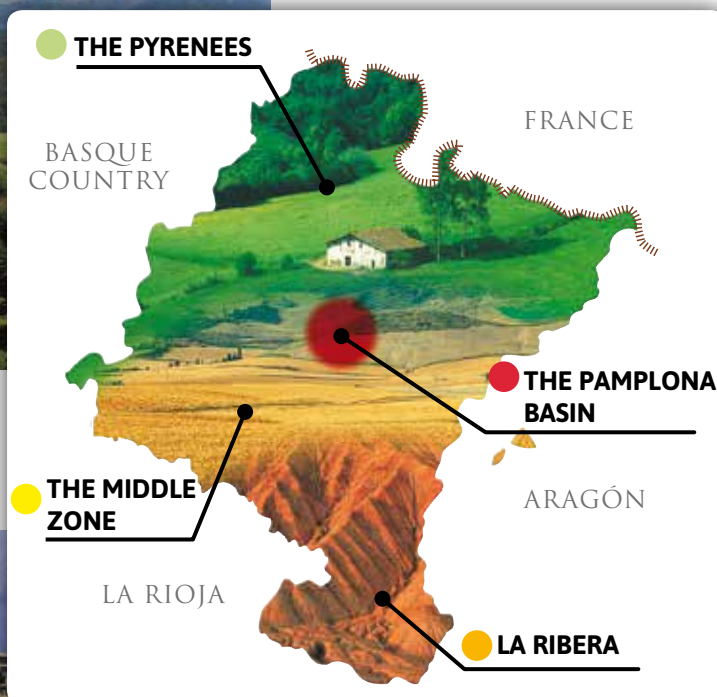
### **The Pyrenees: forests, mountains and valleys**

The Pyrenees rise up to the north of Navarra, a mountainous region which has been traversed for centuries by soldiers, shepherds, kings and pilgrims. The Pyrenees form a landscape of soaring peaks and plunging valleys, forests, alpine meadows, gorges and ravines.



### **The Pamplona Basin: history, peace... and fiesta!**

Pamplona is the political, administrative, economic and cultural centre of Navarra. Globally identified with the Sanfermines and the Way of St. James, the ancient walled city today spans the basin of the River Arga and along with its adjacent municipalities forms an urban continuum that is home to a quarter of a million inhabitants. In addition to the appeal of its historic centre, travellers will find Pamplona to be a dynamic city with a wide variety of urban features, a lively business and shopping centre and extensive green zones.



### **The Middle Zone: towns, castles and monasteries**

The Middle Zone is all about history. Kings and abbots, fortresses, castles and palaces; this is where centuries have passed among the winds, the clouds, the gentle hills, the vineyards and the crop fields. The Middle Zone is home to several distinctive counties and is crossed from east to west by the Way of St. James: the County of Sangüesa or the low mountains; the central area of Olite and Valdorba, and the Land of Estella.



### **La Ribera: the landscapes and allotments of the Ebro**

La Ribera is a bright, open land of plains with an agricultural tradition that was inherited from the Arabs. Its produce forms the basis of a cuisine that is unique in the world. In La Ribera you will find the natural desert park of Bardenas Reales which has been declared a Natural Biosphere Reserve by UNESCO. The capital of La Ribera, Tudela, recalls the coexistence of Arabs, Jews and Christians with its beautiful Cathedral built between the 12th and 18th centuries on top of the site of an ancient mosque.





## EXHILARATING NATURE



**Navarre is a paradise for lovers of nature and ecotourism. Almost 50% of its territory is protected by some form of environmental listing, which has made the region a benchmark of nature conservation.**

**These are some of the natural resources that can be visited in each zone.**

From the snowcapped peaks of the Pyrenees to the arid lands of the Bardenas Reales, discover the wealth of nature carefully preserved by this region. The **climatic variations** in Navarre, surprising for a small community like this one, have provided ever-green valleys, beautiful and coloured forests, spectacular gorges carved by the passing of water, lakes and reservoirs, legendary caves and many protected spaces, including three natural parks.

*If you love nature, you will feel right at home.*



### ▲ BARDENAS REALES NATURE RESERVE

A UNESCO Biosphere Reserve, this is a semi-desert landscape of 42,500 hectares that stuns and surprises with each new visit. A unique landscape to the south-east of Navarre, near Tudela, it is home to some incredible natural features.

The erosion of its clay, gypsum and sandstone soils has sculpted whimsical shapes, creating an almost lunar landscape populated with ravines, flat plateaus and lonely hills. It has been a source of inspiration for painters and writers and used as a backdrop for television commercials, music videos and movies.

### ▼ THE IRATI FOREST

This is a medieval forest and the second largest and best preserved beech and fir forest in Europe after Germany's Black Forest. It is a huge green blanket of around 17,000 hectares that is still in an almost totally unspoilt state. Dense beech forests, pastures, spruce trees and fresh water paint a landscape of bright colours that is transformed with each new season and provides the ideal setting for rambling, hiking and nature-watching.







## ▼ SEÑORÍO DE BERTIZ NATURE RESERVE

Located 49 km from Pamplona, this beautiful botanical garden features some unique species such as Chinese ginkgos, sequoias from California, chestnut trees from the Balkans and water lilies... it is also home to some lovely wildlife such as black-birds, squirrels and woodpeckers, making it the ideal scenario for spending a quiet day feeling the heartbeat of the forest. All this is possible in the 2,040 hectares of lush vegetation, a green corner of great beauty in the Western Pyrenees of Navarre on the banks of the Bidasoa River.



## THE LUMBIER GORGE AND THE ARBAIUN GORGE

These two gorges are very close together and share an Interpretation Centre in the town of Lumbier.

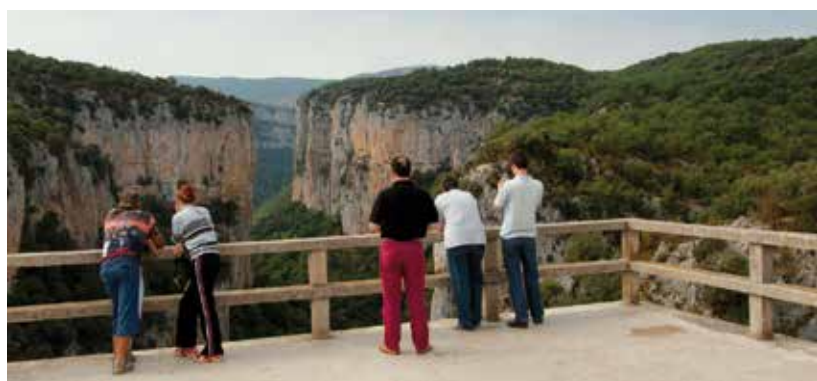
**The Arbaiun Gorge** is the largest and most impressive gorge in Navarre, with 6 km of stunning vertical walls where a large colony of griffon vultures nests, visible from the balcony overhang of the Iso viewpoint. It is a Nature Reserve and a Special Protection Area for Birds.

The unique feature of **the Lumbier Gorge** is that it can be traversed from inside thanks to a green-way that runs along the river Irati where in earlier times the first electric train in Spain used to run. Along its 1,300 metres you can watch the soaring flight of griffon vultures from the cliffs, enjoy views of the river whose rushing waters are still carving out the rock, and see the ruins of the bridge which, according to legend, was built with the help of the devil.



## ▲ URBASA-ANDÍA NATURE RESERVE

Millions of years ago the relief of a large plateau known as Zunbeltz or Lizarraga changed forever. A gigantic tectonic collapse occurred which led to the opening of a wide corridor between the familiar Sierras of Urbasa and Andía. Meadows and leafy beech woods alternate in this protected area of idyllic landscapes, whose southern edge drops sharply down to the Améscos Valley, forming an impressive natural viewpoint over the cirque of the source of the River Urederra. You can discover all its secrets on a range of blazed hiking trails, spectacular viewpoints and different information centres.



Viewpoint of the Arbaiun Gorge.



Lumbier Gorge.



Interpretation Centre, Lumbier.





## MONUMENTAL SPACES

**Roman villas, tiny little Romanesque churches, Gothic monasteries and cathedrals, medieval towers and walls and evocative historical quarters reveal the history of this kingdom, stone by stone, and blend into a landscape of contrasts.**

The mark left by the Roman culture, the route of the Santiago Way, the cultural exchanges and the fact it was once a Kingdom, are all present in the fascinating **artistic legacy** that can now be enjoyed for all visitors, whether in their own time or in the expert hands of professional guides. But as well as the monumental heritage, the culture extends to other attractive fields such as the acclaimed **gastronomy** of Navarre, which we highly recommend, as well as fascinating events such as the **fiestas and traditions** that have been so carefully preserved in this region. Get involved and take part in our culture across the entire region.



Roman villa of Las Musas, Arellano.



Santa María, Viana.

## THE WAY OF ST. JAMES



The Way of St. James passing through Puente La Reina.

Currently the most well-known access of **the French Way** is the one that enters Navarre across the Pyrenees via Luzaide/Valcarlos. The route takes you from the Pyrenean landscapes of the north to the plains of the Middle Zone through beech forests, grain fields and vineyards.

This itinerary abounds in little one-street villages, medieval bridges, great monuments, landscapes that change

colour with each season, wineries and exceptional cuisine.

The Way of St. James is a religious, cultural and social phenomenon that was born in the Middle Ages. Over the centuries, knights Templar, monarchs, nobles, wizards, giants, princesses, magicians, the poor, knights and pilgrims from all of Christendom have travelled hundreds of kilometres to kneel before the tomb of the Apostle St. James the Elder, son of thunder.



### TWO MAJOR ROUTES CROSS THE KINGDOM OF NAVARRE:

- El One entering from the Pyrenees via Luzaide/Valcarlos, going through the legendary Orreaga/Roncesvalles, and one from Aragon which passes through Sangüesa.
- There are also two minor routes through the community: the Baztan way and the Ebro way.





# GASTRONOMY



## PRODUCTS FROM OUR LAND AND GOOD FOOD

Navarre's geographic diversity is also reflected in its cuisine. The dairy products and game of the Pyrenees lead to the lamb and wines of the Middle Zone, to conclude with the prolific and exquisite produce of the Ribera region. And although all the products can be found across the region, each particular area also offers its own specialities.

Some restaurants have earned international renown by balancing tradition and modernity, and also thanks to the magnificent quality of local ingredients, several of which are included in protected designations of origin.

One should also not forget the miniature haute cuisine of the local 'pinchos' (tapas), a popular tradition that, in recent years, has turned into a wide range of innovative, imaginative, unique morsels which is particularly extensive and varied in the capital, Pamplona.



## THE KINGDOM OF GOOD FOOD

**Navarre offers visitors the flavours of yesteryear thanks to a culinary tradition which has been faithfully maintained: making a social event out of each meal.**

**Popular cuisine employs all the products provided by Navarre's varied landscape. Catering establishments have also achieved international renown thanks to the top quality of local raw ingredients. Navarrese chefs are among the most highly-reputed in nouvelle cuisine.**

## NAVARRA DESIGNATION OF ORIGIN

Navarrese cuisine combines traditional, painstaking recipes merged with the latest culinary trends, always based on the superb quality of local products.

The fact is that Navarre has no less than fifteen Quality Certifications and eight Specific Technical Standards, all of which are covered under the Reyno Gourmet generic brand.



### Protected Designations of Origin:

- ❖ Lodosa Piquillo Peppers
- ❖ Roncal Cheese
- ❖ Idiazabal Cheese
- ❖ Navarra Wine
- ❖ Vinos de Pago single-estate wines
- ❖ Navarra Olive Oil
- ❖ Rioja Wine
- ❖ Cava

### Protected Geographical Indications:

- ❖ Navarra Asparagus
- ❖ Tudela Artichokes
- ❖ Navarra Beef
- ❖ Navarra Lamb
- ❖ Navarra Pacharán
- ❖ Vino de la Tierra 3 Riberas wine







## THE 'PINCHOS':

### MINIATURE HAUTE CUISINE

*Lovers of good food flood the streets of Pamplona to taste innovative, imaginative and unique miniature haute cuisine titbits served in pairs.*

### PINCHO WEEK

The Navarre Hotel and Catering Association organises this unique event that celebrates pincho culture in this region. More than 100 bars participate in this

festival every year. It is held in various towns across Navarre but the highest concentration is to be found in the capital, Pamplona. They create delicate, elaborate recipes that compete for one of the prizes—gold, silver, bronze—awarded by the jury panel to attest to the quality of the award-winning appetiser. In addition, the Navarre Food Quality Institute grants themed awards to 'pinchos' that include specific Navarrese products, such as asparagus, artichokes or beef.

## FOOD EVENTS

A different way of enjoying Navarrese cuisine is to participate in food events and food days which are held across the region year round.

**These are some of the most important events:**

- ▶ **Pig slaughter** (Azuelo): late February
- ▶ **Toast Day** (Arróniz): late February
- ▶ **Vegetable Festival** (Tudela): late April, early May
- ▶ **Pincho Week** (Pamplona and district): spring
- ▶ **Asparagus Day** (Dicastillo): May
- ▶ **Cherry Day** (Milagro): mid June
- ▶ **Rosé Day** (San Martín de Unx): early June
- ▶ **Junket Day** (Ultzama Valley): early June
- ▶ **Shepherd's Day** (Uharte Arakil): late August
- ▶ **Harvest festival** (Olite) September
- ▶ **Migas Day** (Ujué): mid September
- ▶ **Talo Day** (Leitza): early September
- ▶ **Navarra Cider Day** (Lekunberri): late September
- ▶ **Piquillo Pepper Day** (Lodosa): early October
- ▶ **Mushroom Days** (Elgorriaga): October
- ▶ **Cazuelica and Navarra Wine Pairing Week** (Pamplona): October
- ▶ **Viana Food Week** (Viana): late October
- ▶ **Winter Vegetable Food Festival** (Navarre): November
- ▶ **Truffle Fair** (Valdorba): mid December





# LEISURE



*Pamplona is a welcoming, pleasant and fun city, which hosts thousands of visitors each year at the San Fermín festivities. Yet throughout the year, and particularly over weekends, the streets of the historical centre are filled with people enjoying one of the city's longest-standing traditions: tasting the huge range of pinchos and wines on offer at the numerous establishments. Whether you are with your family, friends or partner, be sure not to miss out on this fun and friendly atmosphere.*

*A special mention should be given to Pamplona's wealth of culture, with its different museums, theatres, arenas, auditorium and halls. Functions and exhibitions of the great classics, emerging musical talent and the most famous artists, as well as cutting edge shows, each weekend Pamplona has a whole host of options, positioning the Navarrese capital at the very forefront of event organisation.*







When night falls the bars, discos and a Café-theatre open their doors for visitors to enjoy the best music and a quality drink. The city centre has different areas filled with eclectic bars, where everyone can find music to match their tastes; or pubs, where the relaxing and enjoyable atmosphere lets you catch up with friends over a drink with the most select music playing in the background.







# TOURIST ACTIVITIES



*Stand-up paddle boarding  
in the Alloz reservoir*



*Way of St James*



*Horse riding*



*Basque-Navarre rail trail*



*Cross-country skiing*

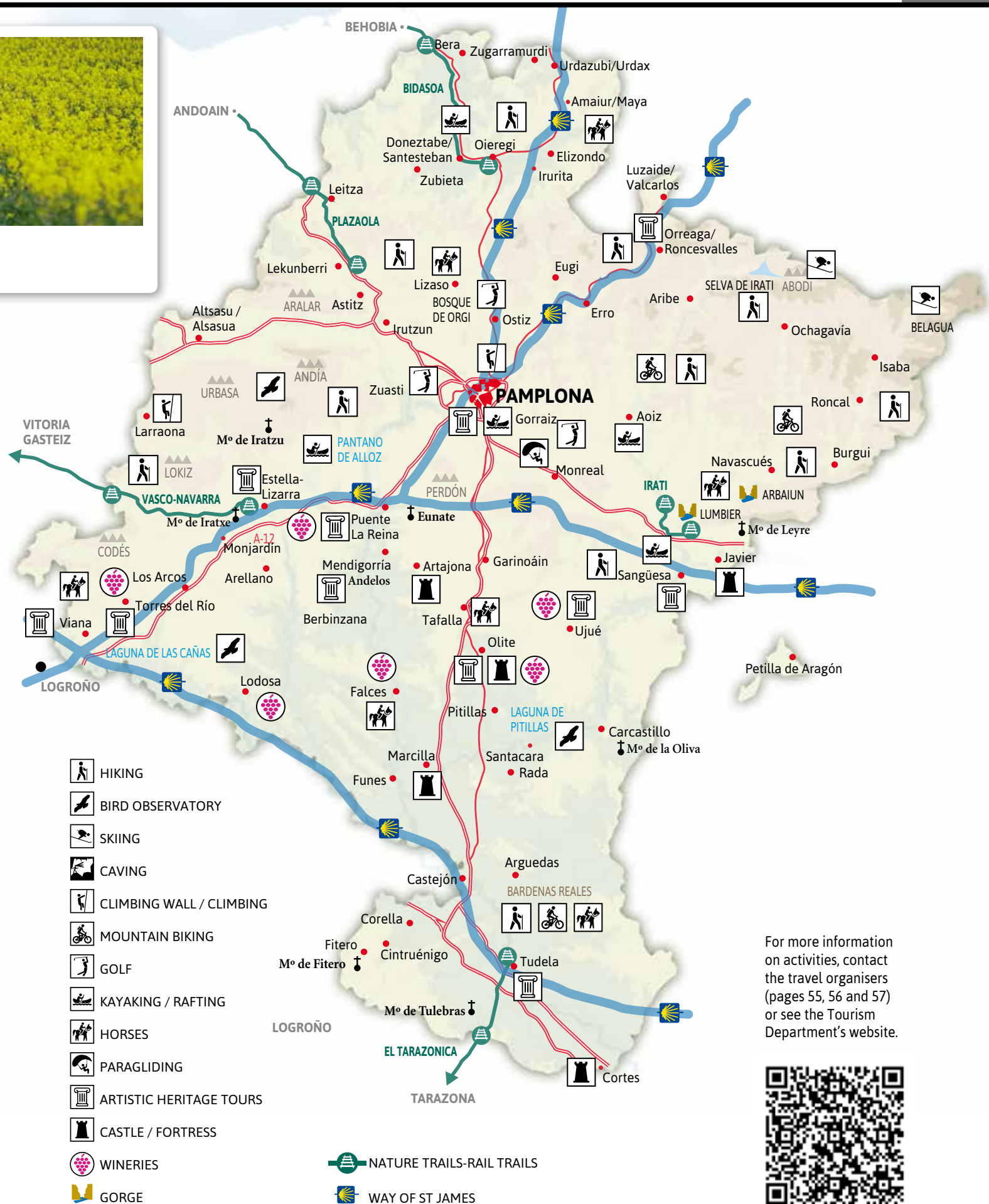


*Ziplining*



*Activities in nature*





For more information on activities, contact the travel organisers (pages 55, 56 and 57) or see the Tourism Department's website.





# MOBILITY

## HOW TO GET AROUND NAVARRE

Navarre is an easy region to travel around for a tourist. There are four highways that cross the territory from North to South and East to West, as well as several main roads that are ideal for motorcyclists. It is a unique region in Spain that offers mountains, the sea and desert-like landscapes just one hour (or less) from Pamplona. Without a doubt, it offers the greatest variety of landscapes in southern Europe.

For visitors arriving by air, the best option is to rent a car – with or without a driver – or coach travel if you are travelling in a group.



## CHAUFFEURED VEHICLE HIRE SERVICE

In Spain chauffeured vehicle hire for the transportation of travellers is regulated so as to offer clients the highest guarantees and safety.

This type of service is offered with high-range vehicles, 24 hours a day, 365 days a year, with punctuality, reli-

ability and discretion. It operates both nationally and internationally.

Within the range of vehicles there are also some that have up to 8 spaces, as well as adapted vehicles for wheelchairs.





# EDSACARS

Pol. Ind. Comarca II, Calle A, nº 28 - 31191 Barbatáin

Tel: 948 13 19 33 - Fax: 948 21 41 55

[www.edsacars.com](http://www.edsacars.com)

[sergio@edsacars.com](mailto:sergio@edsacars.com)

A company offering high-range chauffeured vehicle hire, with over 20 years of experience in the passenger transportation sector.

We provide companies and individuals with our extensive fleet of cars and people-carriers that are perfectly equipped and suitable for covering any transportation requirements both in Navarre and outside of the autonomous community.

We offer an exclusive transfer service that is exceptional in the way it adapts fully to your needs. We prepare tailor-made transfers thanks to our wide variety of vehicles with a capacity of up to 8 spaces. If more capacity is required for travellers, we also have a vast fleet of coaches and minibuses at your disposition.

Our main services are airports pick-ups, wedding transfers, tourism routes or support vehicles for pilgrims that are following the Santiago Way.

To ensure the very best service, our team has provable experience and professionalism that will make your journey a comfortable, safe and pleasant experience.



# PARRA

Plaza Vera Magallón, 11. 31570 San Adrián

Tel: 948 67 03 31

[www.autobusesparra.com](http://www.autobusesparra.com)

[parra@autobusesparra.com](mailto:parra@autobusesparra.com)

We have a modern fleet of buses equipped with the very latest advances in comfort and safety, meeting current standards in terms of road travel transportation.

Our fully equipped high-range coaches have all the commodities possible for its national or international journeys.

For families or small groups we have different luxury people-carriers, with a capacity of 7 and 8 passengers plus the driver. We also have specially adapted people-carriers for PRM (People with Reduced Mobility) with a ramp at the rear and with space for wheel-chairs inside the vehicle.

If there are any transportation requirements for large groups, we have different models with various capacities, ranging from 19 to 72 spaces. For us, safety comes first. That is why at Parra all of our coaches have the very best safety possible and the latest technology. The average age of our buses is 2 and a half years.



## DAREVA AERO • César Santesteban

tel: +34 609 494 811

[cesar@acinversiones.es](mailto:cesar@acinversiones.es)

More information

<https://www.facebook.com/Avionprivadopamplona/>

**DAREVA AERO** is an aircraft operator. The company operates a modern SOCATA TBM 850 with turbine technology, designed to carry 4 passengers or, exceptionally, 5. This plane has a purchase price that is similar to conventional jets of the same capacity (3.9 million dollars) yet it has a much more competitive operating cost, making private aviation more affordable for users who need to optimise their time.

The TBM 850 has an operating ceiling of 31,000 feet, a speed of 600 km/h and can operate in large airports (Madrid, Barcelona, Munich, London, etc.) and even in small airfields that are closer to a possible out-of-the-way destination.

The DAREVA crew is formed by two highly experienced commercial pilots. Likewise, an operations support service studies each flight in detail in order to get the best route and any aircraft ground services that the passengers may require.

By way of example, detailed below are some flight times\* and the cost of a same day return journey:

- Pamplona-Málaga: 1h 40 min
- Pamplona- París: 1h 40 min
- Pamplona-London 2h
- Pamplona-Ibiza: 1h



\* Operating circumstances at high density traffic airports and outside the control of DAREVA, may lengthen the flight time.

## CAR RENTING

		@	@	
<b>PAMPLONA AIRPORT</b>				
	AVIS -BUDGET GROUP	<a href="http://www.avis.com">www.avis.com</a>	<a href="mailto:e-pamplona.ciudad@avis.es">e-pamplona.ciudad@avis.es</a>	34 948 16 87 63
	ENTERPRISE - ATESA	<a href="http://www.enterprise.es">www.enterprise.es</a>	<a href="mailto:es.reservas.supinternacional@ehi.com">es.reservas.supinternacional@ehi.com</a>	34 948 31 28 10
	EUROPCAR	<a href="http://www.europcar.es">www.europcar.es</a>	<a href="mailto:esstpnac01@europcar.com">esstpnac01@europcar.com</a>	34 948 31 27 98
	HERTZ	<a href="http://www.hertz.es">www.hertz.es</a>	<a href="mailto:sppam50@hertz.com">sppam50@hertz.com</a>	34 948 31 15 95
<b>PAMPLONA TRAIN STATION</b>				
	ENTERPRISE - ATESA	<a href="http://www.enterprise.es">www.enterprise.es</a>	<a href="mailto:es.reservas.supinternacional@ehi.com">es.reservas.supinternacional@ehi.com</a>	34 948 23 61 62
<b>PAMPLONA CITY</b>				
	ALQUILER PLAZAOLA	<a href="http://www.plazaolacar.com">www.plazaolacar.com</a>	<a href="mailto:oficina@plazaolacar.com">oficina@plazaolacar.com</a>	34 948 06 59 80
	ALVER	<a href="http://www.alvermovil.com">www.alvermovil.com</a>	<a href="mailto:comunicacion@grupomundomovil.com">comunicacion@grupomundomovil.com</a>	34 948 29 22 99
	AVIS -BUDGET GROUP	<a href="http://www.avis.com">www.avis.com</a>	<a href="mailto:e-pamplona.ciudad@avis.es">e-pamplona.ciudad@avis.es</a>	34 948 17 00 36
	EUROPCAR	<a href="http://www.europcar.es">www.europcar.es</a>	<a href="mailto:esstpnac01@europcar.com">esstpnac01@europcar.com</a>	34 948 17 25 23
	UNSÁIN RENT	<a href="http://www.unsainrent.es">www.unsainrent.es</a>	<a href="mailto:alquiler.unsain@red.renault.es">alquiler.unsain@red.renault.es</a>	34 948 23 29 10
<b>NAVARRA</b>				
TUDELA	AVIS -BUDGET GROUP	<a href="http://www.avis.com">www.avis.com</a>	<a href="mailto:e-pamplona.ciudad@avis.es">e-pamplona.ciudad@avis.es</a>	34 669 47 74 92 34 948 82 75 00
	ALVER	<a href="http://www.alvermovil.com">www.alvermovil.com</a>	<a href="mailto:comunicacion@grupomundomovil.com">comunicacion@grupomundomovil.com</a>	34 948 84 83 71
	EUROPCAR	<a href="http://www.europcar.es">www.europcar.es</a>	<a href="mailto:esstpnac01@europcar.com">esstpnac01@europcar.com</a>	34 948 82 00 77
	UNSÁIN RENT	<a href="http://www.unsainrent.es">www.unsainrent.es</a>	<a href="mailto:alquiler.unsain@red.renault.es">alquiler.unsain@red.renault.es</a>	34 948 41 42 84
	BJ RENTAL	<a href="http://www.bjrental.com">www.bjrental.com</a>	<a href="mailto:gestion@bjrental.com">gestion@bjrental.com</a>	34 948 40 34 58
LODOSIA	MISIS AUTOMÓVILES		<a href="mailto:misisautomoviles@soc.redcitroen.com">misisautomoviles@soc.redcitroen.com</a>	34 617 33 30 18
ESTELLA	ALQUINAUTO	<a href="http://www.alquinauto.com">www.alquinauto.com</a>	<a href="mailto:info@alquinauto.com">info@alquinauto.com</a>	34 948 55 66 31





## BUS RENTING

	@	✉	📞
AUTOCARES ARTIEDA	www.autocaresartieda.com	autocaresartieda@autocaresartieda.com	34 948 30 02 87
AUTOCARES EDSA	www.edsa.es	edsa@edsa.es	34 948 13 19 33
AUTOBUSES GURBINDO	www.autobusesgurbindo.com	info@autobusesgurbindo.com	34 948 52 31 13
AUTOBUSES LATASA	www.autobuseslatasa.com	autobuseslatasa@gmail.com	34 948 54 31 41
AUTOBUSES M. LITAGO		mikel@autobuseslitago.com	34 948 80 01 40
AUTOBUSES OLLOQUI	www.autobusesolloqui.es	autobusesolloqui@telefonica.net	34 948 75 40 05
AUTOBUSES PARRA	www.autobusesparra.com	parra@autobusesparra.com	34 948 67 03 31
AUTOBUSES RIO IRATI	www.autocaresalbizua.com	info@autocaresalbizua.com	34 948 30 35 70
AUTOBUSES UREDERRA	www.autobusesurederra.com	aurederra@yahoo.es	34 948 54 62 14
AUTOBUSES Y GARAGE BARIAIN	www.autobusesygarajebariain.com	autobusesbariain@hotmail.com	34 948 87 03 09
AUTOCARES ALBIZUA	www.autocaresalbizua.com	info@autocaresalbizua.com	34 948 30 35 70
AUTOCARES FELIX GASTON	www.autocaresfelixgastonpamplona.es	victor@autocaresfelixgaston.com	34 948 18 81 84
AUTOCARES IBARGOITI	www.autocaresibargoiti.es	ibargoiti@yahoo.es	34 948 30 34 00
AUTOCARES MARIA JOSE	www.autocaresmariajose.es	autocaresmariajose@hotmail.com	34 948 74 68 68
AUTOCARES OROZ	www.oro.info	info@oro.info	34 948 13 09 96
AUTOCARES PECHE	www.autocarespeche.com	contacto@autocarespeche.com	34 948 30 34 14
AUTOMOVILES RIO ALHAMA	www.arasa.es	arasa@arasa.es	34 948 82 02 82
CONDA	www.conda.es	comercial@condasa.com	34 902 422 242
FALCES AUTOBUSES SANCHEZ	www.autobusesanchez.com	info@autobusesanchez.com	34 948 71 47 20
FONSECA BUS	www.autocaresfonseca.com	autocaresfonseca@autocaresfonseca.com	34 948 30 22 21
GURREA HERMANOS	www.autobusesgurrea.com	gurrea@autobusesgurrea.com	34 941 13 47 33
LA BAZTANESA	www.labaztanesa.com	autobuses@labaztanesa.com	34 948 58 01 29
LA BURUNDESA	www.laburundesa.com	info@laburundesa.com	34 948 30 35 05
LA ESTELLESA	www.laestellesa.com	info@laestellesa.com	34 948 32 65 09
LA MUGUIROARRA	www.lamuguiroarra.com	lamuguiroarra@infonegocio.com	34 948 30 26 23
LA PAMPLONESA	www.lapamplonesa.com	autobuses@lapamplonesa.com	34 948 18 88 81
LA TAFALLESA	www.conda.es	comercial@condasa.com	34 902 422 242
LA VELOZ SANGUESINA		lavelozsl15@gmail.com	34 948 87 02 09
LA VIANESA	www.lavianesa.com/	lavianesa@lavianesa.com	34 948 64 52 31
LEIZARÁN MARIEZCURRENA	www.autobusesleizaran.net/leizaran	leizaran@telefonica.net	34 948 22 40 15
OYARBUS		nachooryarzun@hotmail.com	34 948 23 15 15
PLM AUTOCARES	www.plmautocares.com/	info@plm.autocares.com	34 941 20 27 77

An aerial photograph of Pamplona, Spain, showing the dense urban landscape with its characteristic red-tiled roofs and historic architecture. In the foreground, a large stone fortress (Castell de Navarra) is visible. The city is surrounded by green hills and valleys. The sky is a vibrant blue, filled with fluffy white clouds, and a bright, multi-colored rainbow arches across the upper portion of the frame. A white speech bubble with a black border and a yellow drop shadow is positioned in the center of the image, containing the website address.

[www.turismo.navarra.es](http://www.turismo.navarra.es)